

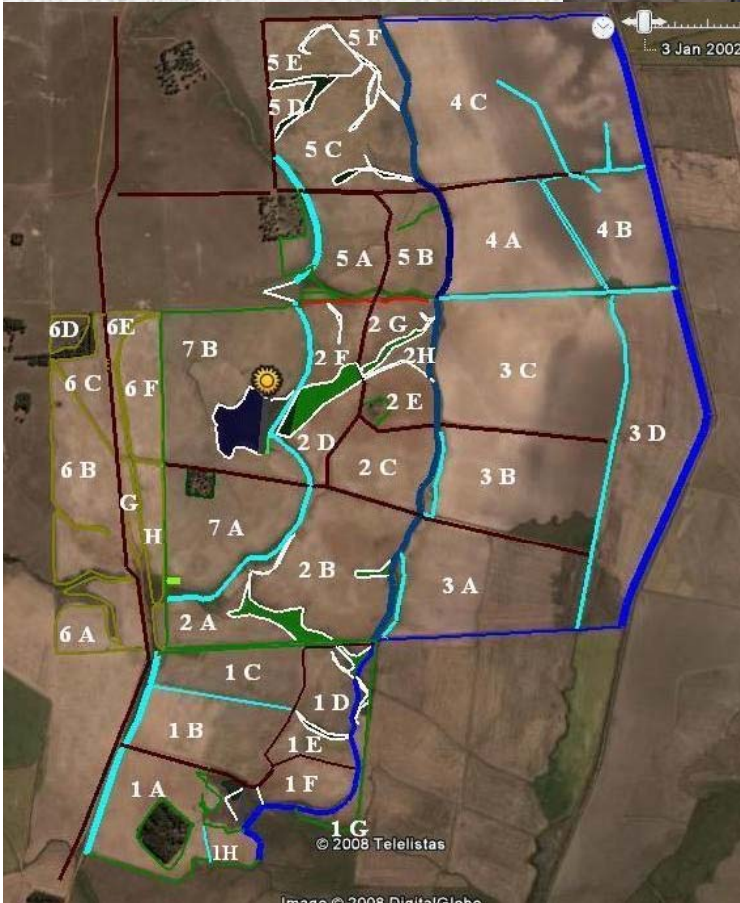
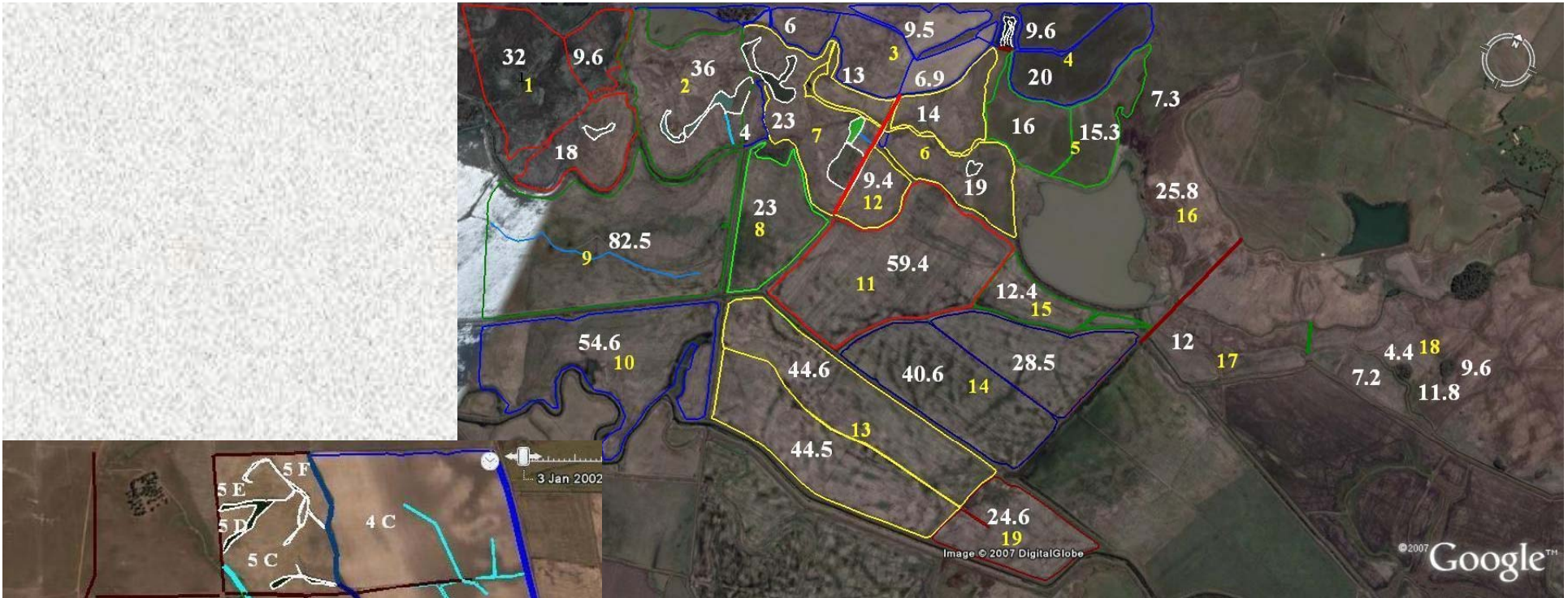
VII JORNADAS DE ARROZ 2009 CORRIENTES

Evolucion del Manejo Fincas Recanto y San Juan
ARROZ DE RIEGO

Tiago Barchet

Datos

- Localidad. San Borja e Itaqui (FO)
- Area. 2200 Ha
- Suelos. 20-40% Arg, 2% MO, 3ppm P, 60ppm K, 5,5Ph
- 1500 mm, 550 Cal/cm²/dia
- Minima Lavranza



Rendimientos

- Promedio 2000-2004
- Promedio 2004-2009
- 6500 Kg/ha
- 8000 Kg/ha

Principios del Manejo

- Tratamiento de las semillas
- Fecha de la siembra
- Densidad
- Nutricion
- Control de malezas
- Manejo del riego










Arktos

Agrícola Horizonta
São Borja-RS Fone (55) 431-9











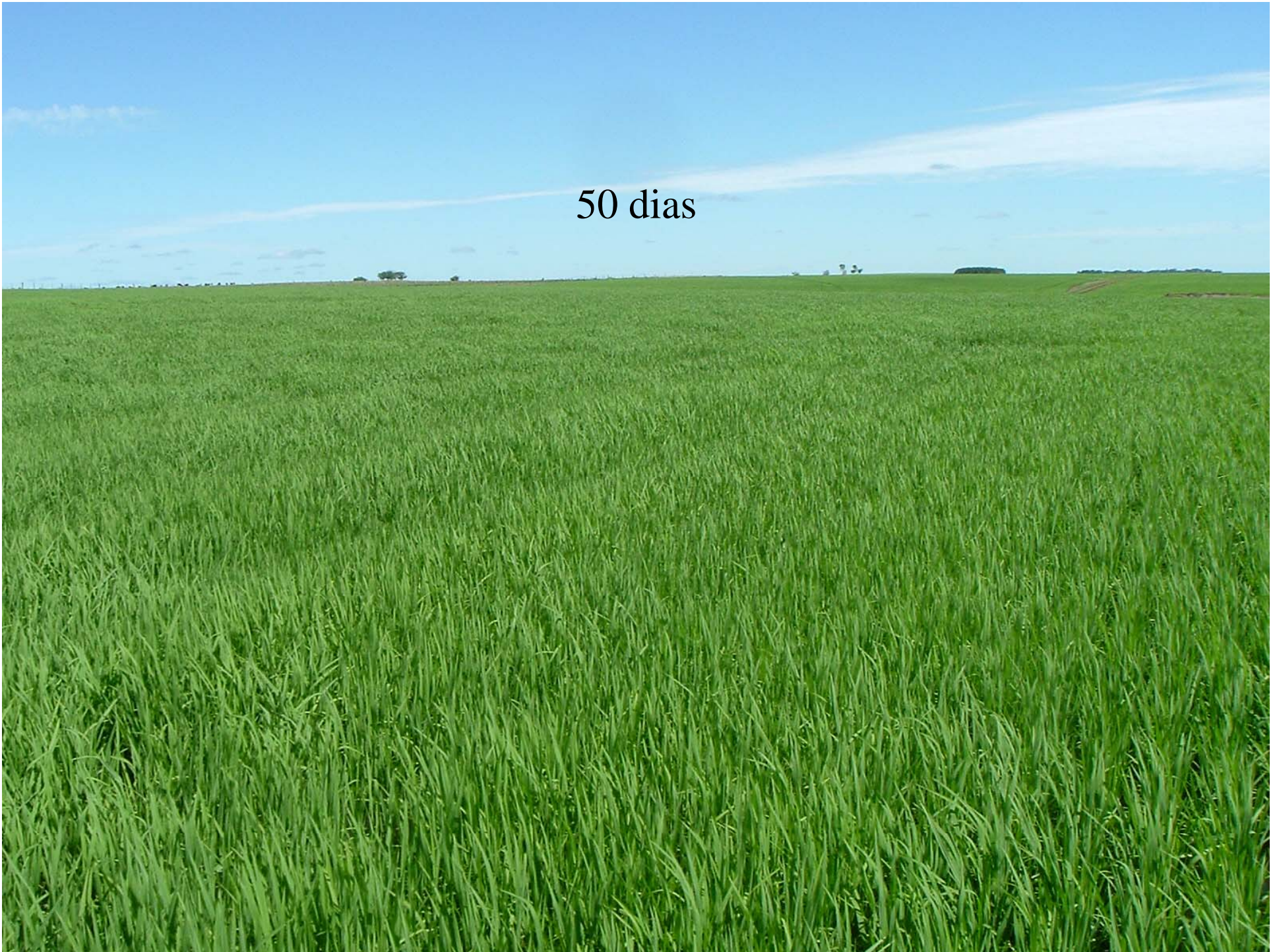
15 dias





25 dias

50 dias



90 dias



A close-up photograph of rice plants. The image shows several panicles of rice grains, which are a light yellowish-brown color, indicating they are ripe. The panicles are surrounded by long, narrow green leaves. The lighting is bright, creating some shadows and highlights on the grains and leaves.

MUCHAS
GRACIAS