

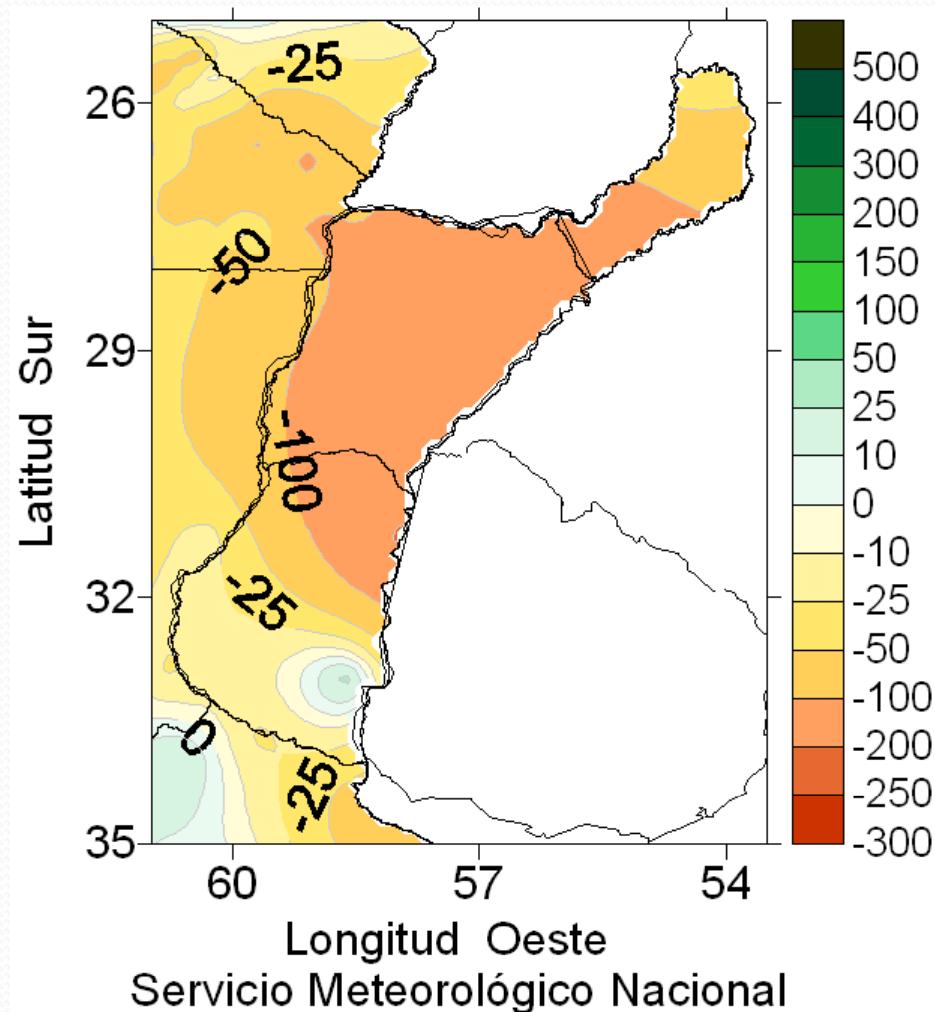
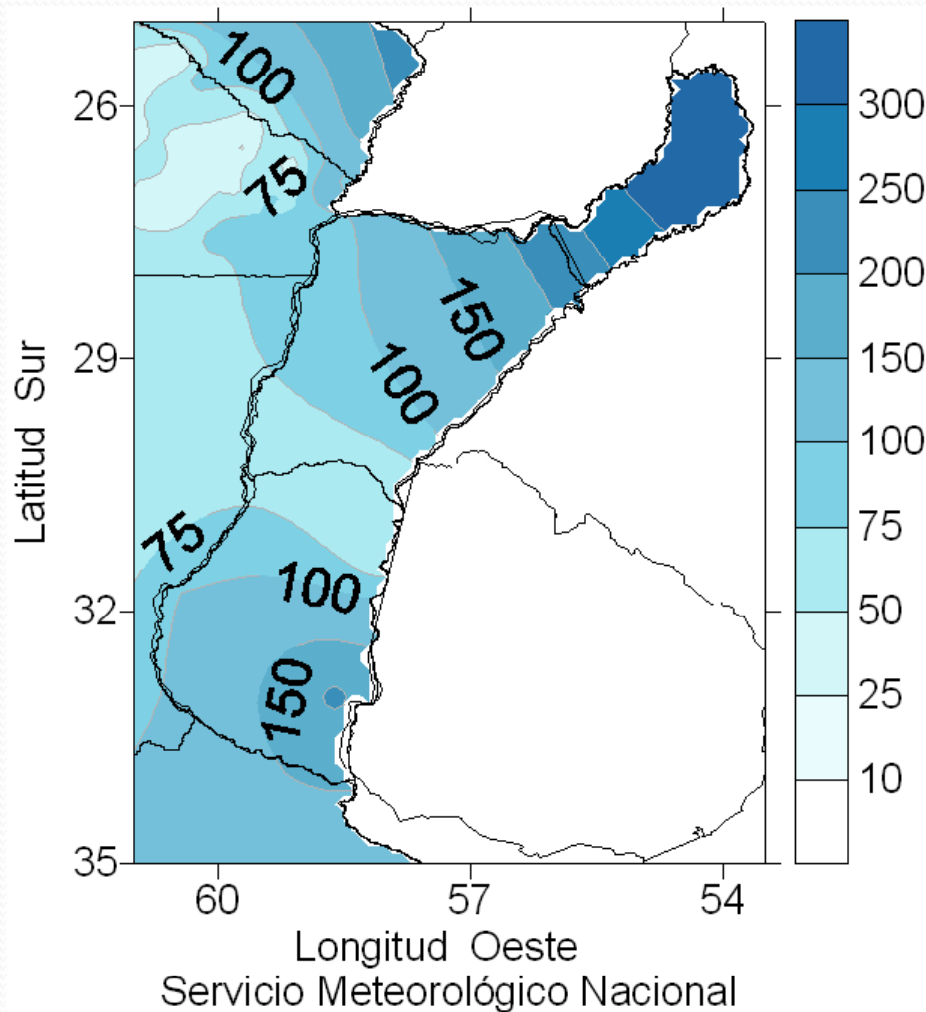


Pronóstico climático campaña 2012/2013

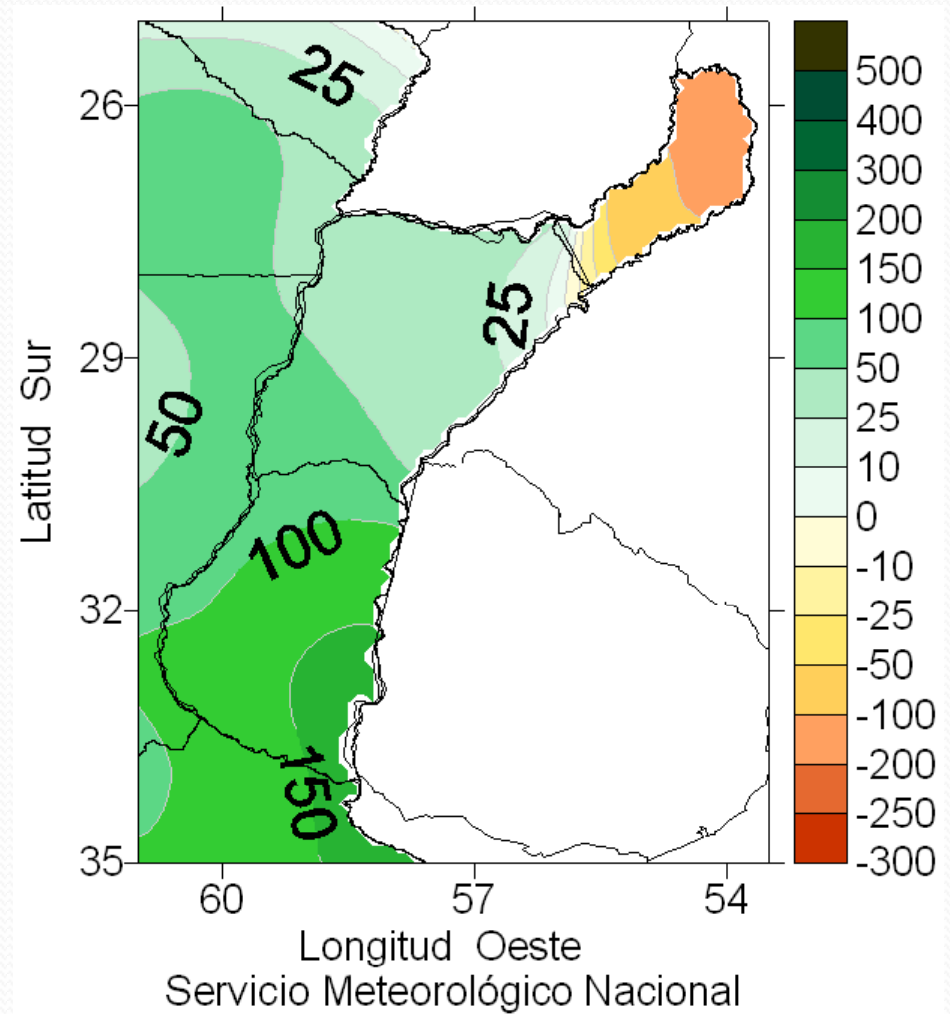
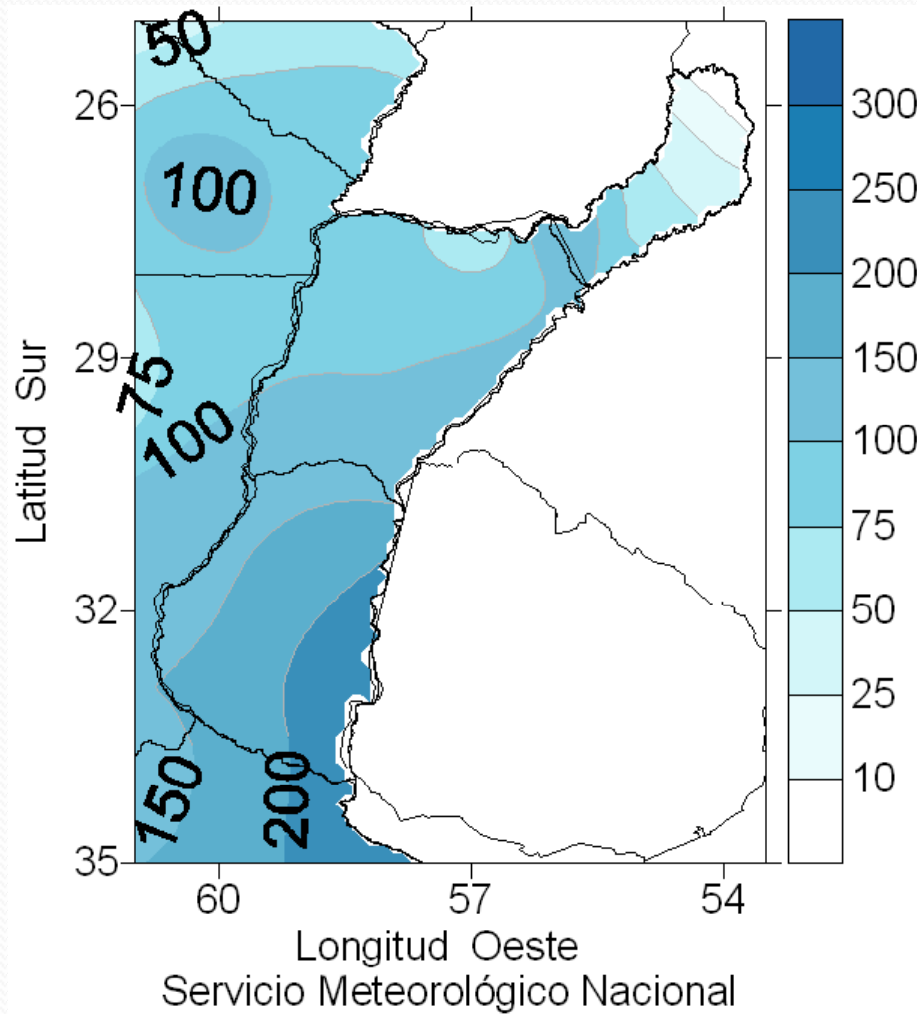
Lic María de los Milagros Skansi
Departamento Climatología
Servicio Meteorológico Nacional
mms@smn.gov.ar

X Jornada de Arroz – 30 de agosto de 2012 -Mercedes - Corrientes

Mayo-Junio-Julio: total y anomalía (mm)



1 al 28 de agosto: total y anomalía (mm)



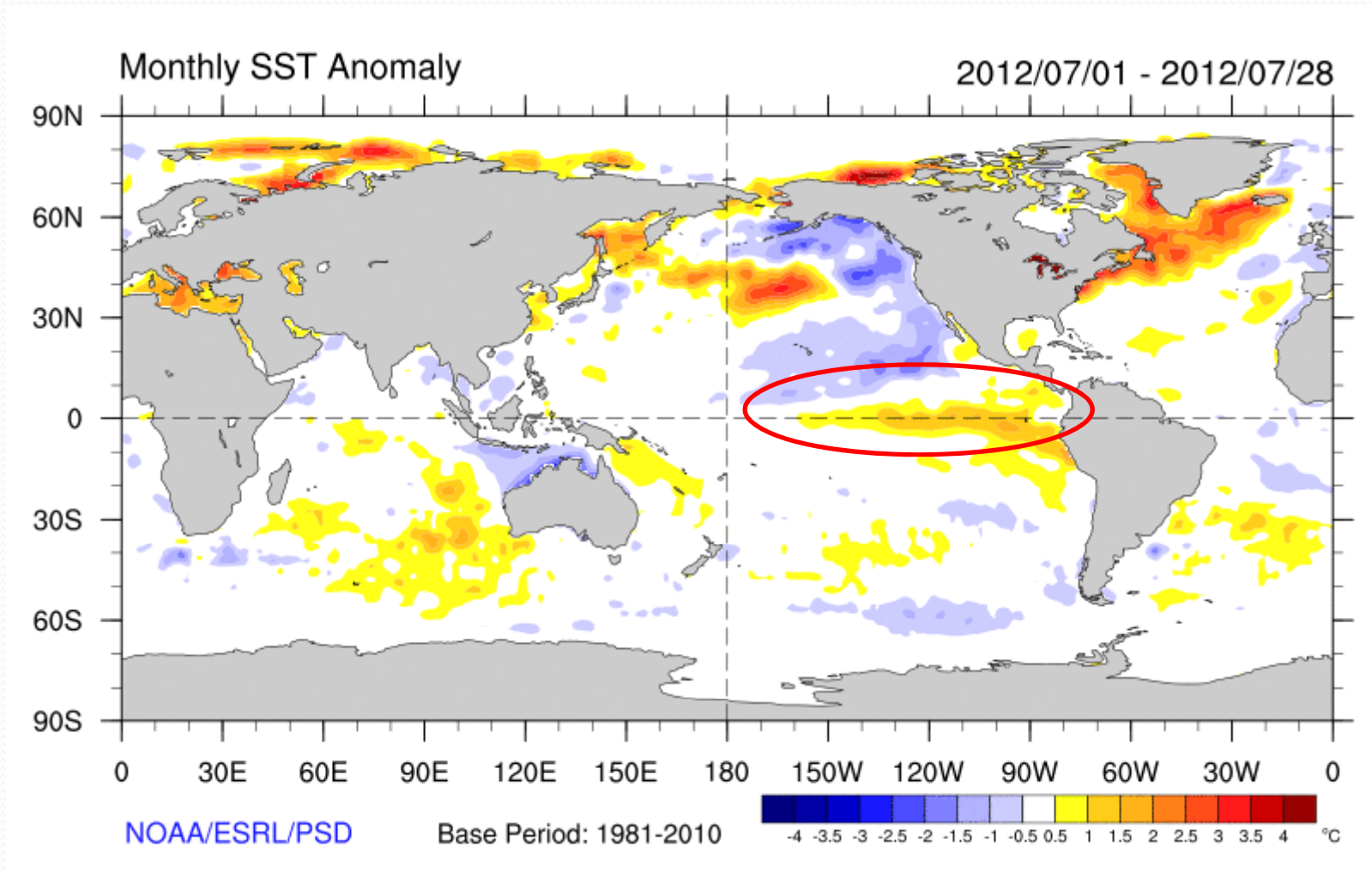


Situación actual del Fenómeno

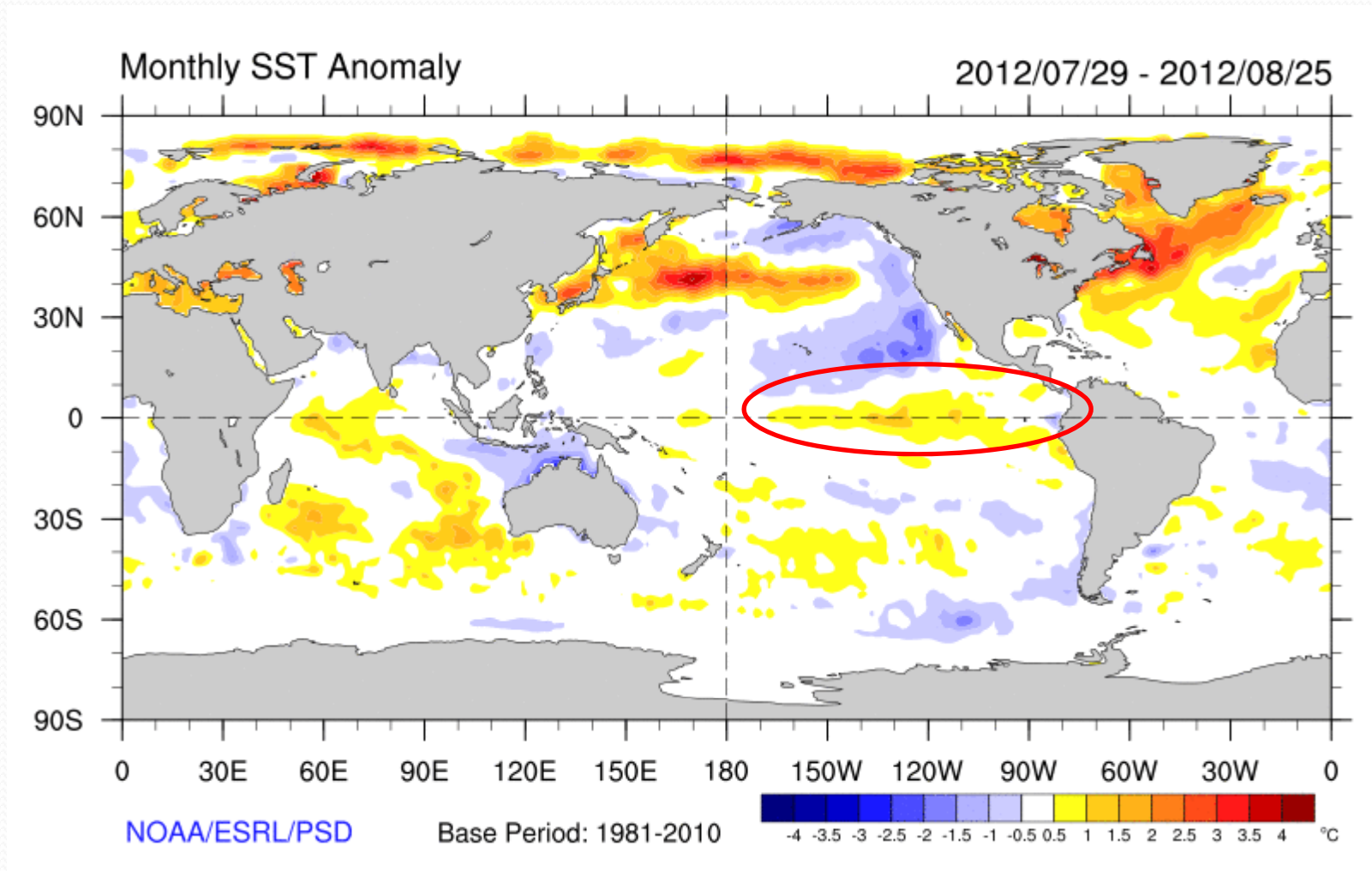
El Niño – Oscilación del Sur y

Pronóstico de su evolución

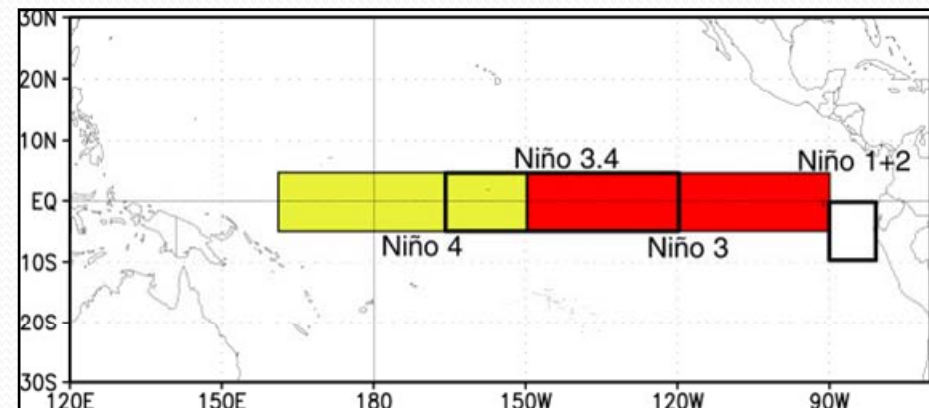
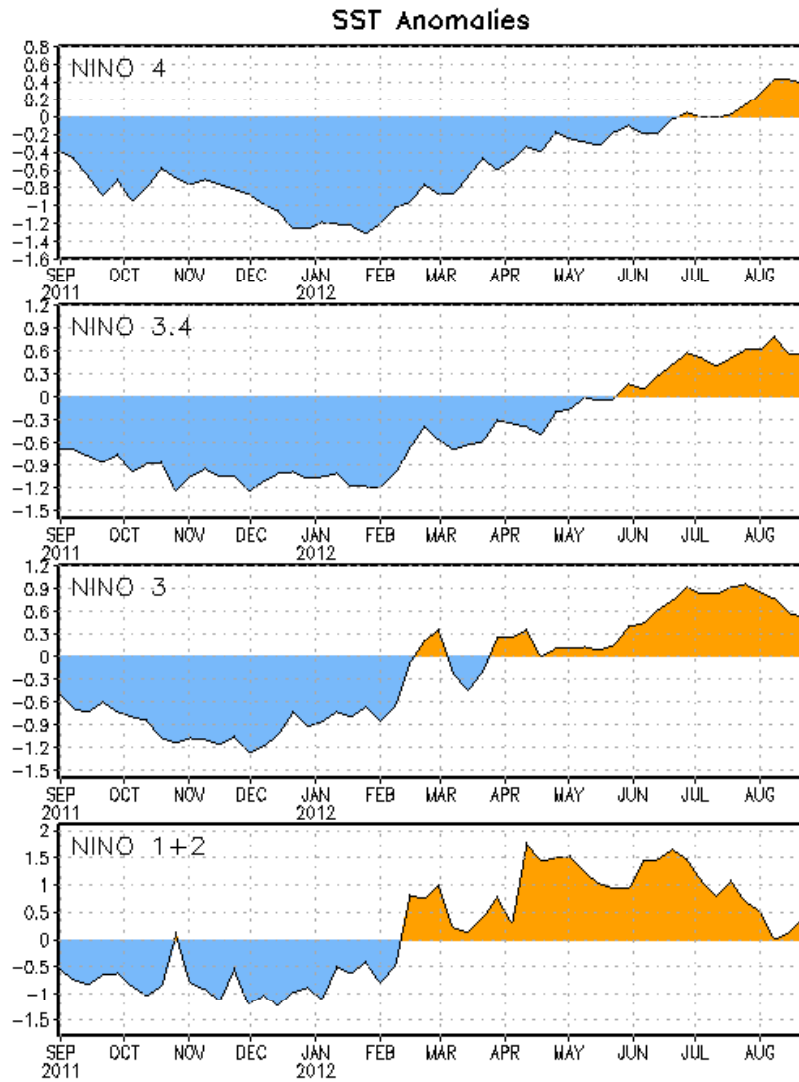
Anomalía de la temperatura superficial del mar (TSM)



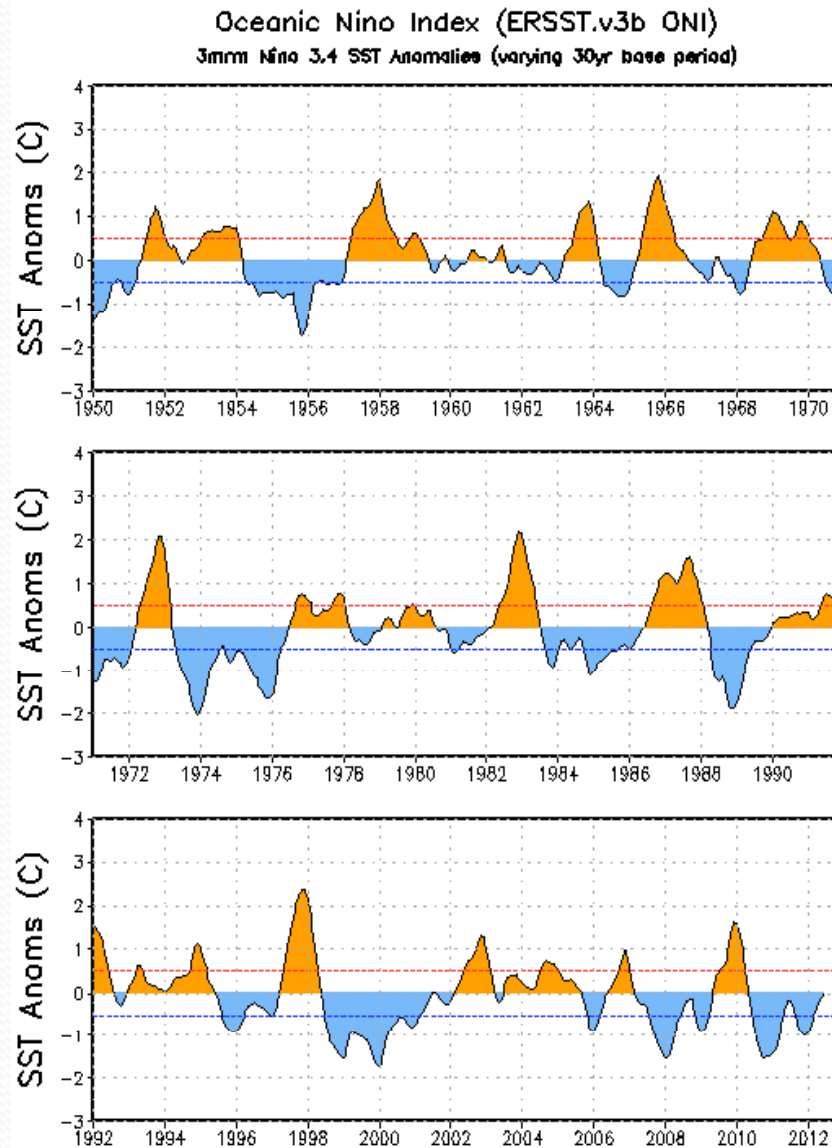
Anomalía de la temperatura superficial del mar (TSM)



Evolución TSM por regiones Niño

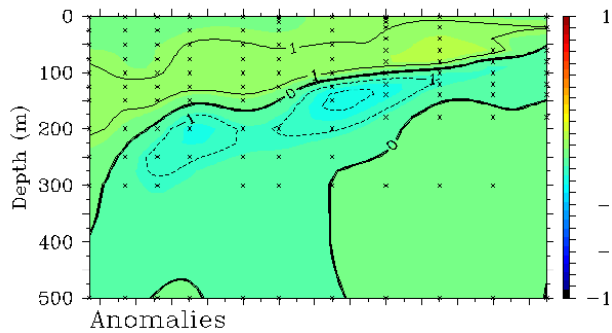
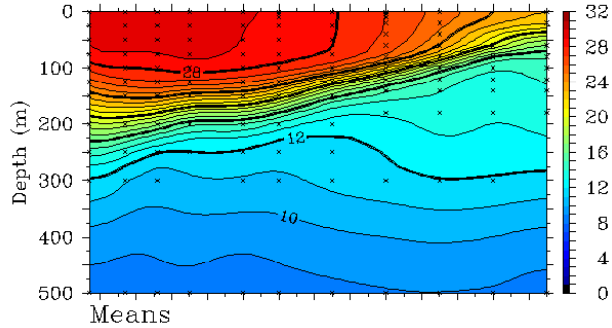


Evolución Índice Oceánico



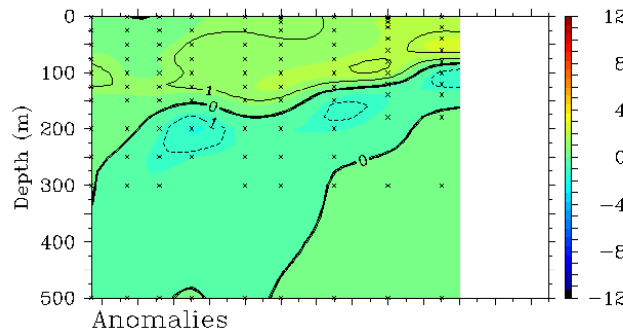
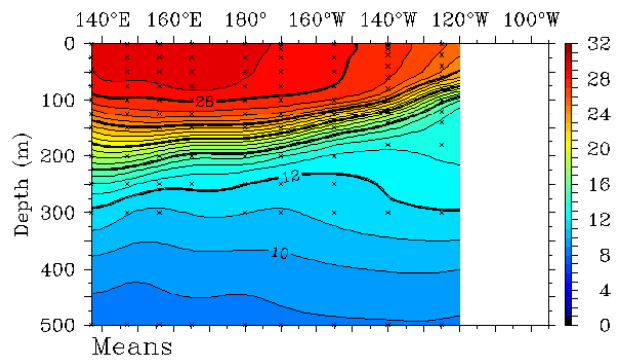
Anomalía de la temperatura subsuperficial del mar (TSM)

TAO/TRITON 5-Day Mean Temperatures (°C)
Ending on August 7 2012 2°S to 2°N Average
140°E 160°E 180° 160°W 140°W 120°W 100°W



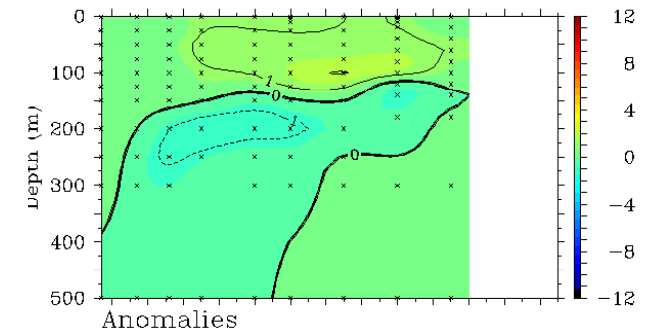
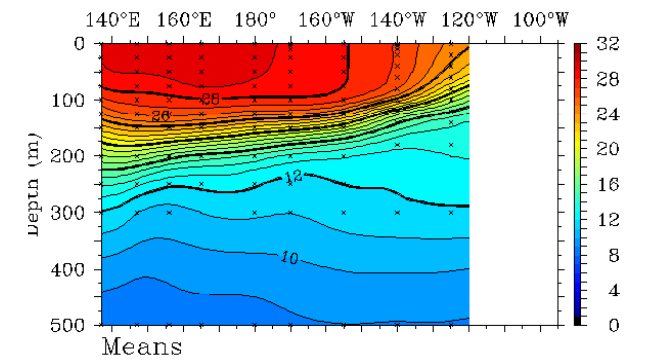
TAO Project Office/PMEL/NOAA

TAO/TRITON 5-Day Mean Temperatures (°C)
Ending on August 17 2012 2°S to 2°N Average
140°E 160°E 180° 160°W 140°W 120°W 100°W



Aug 28 21 TAO Project Office/PMEL/NOAA

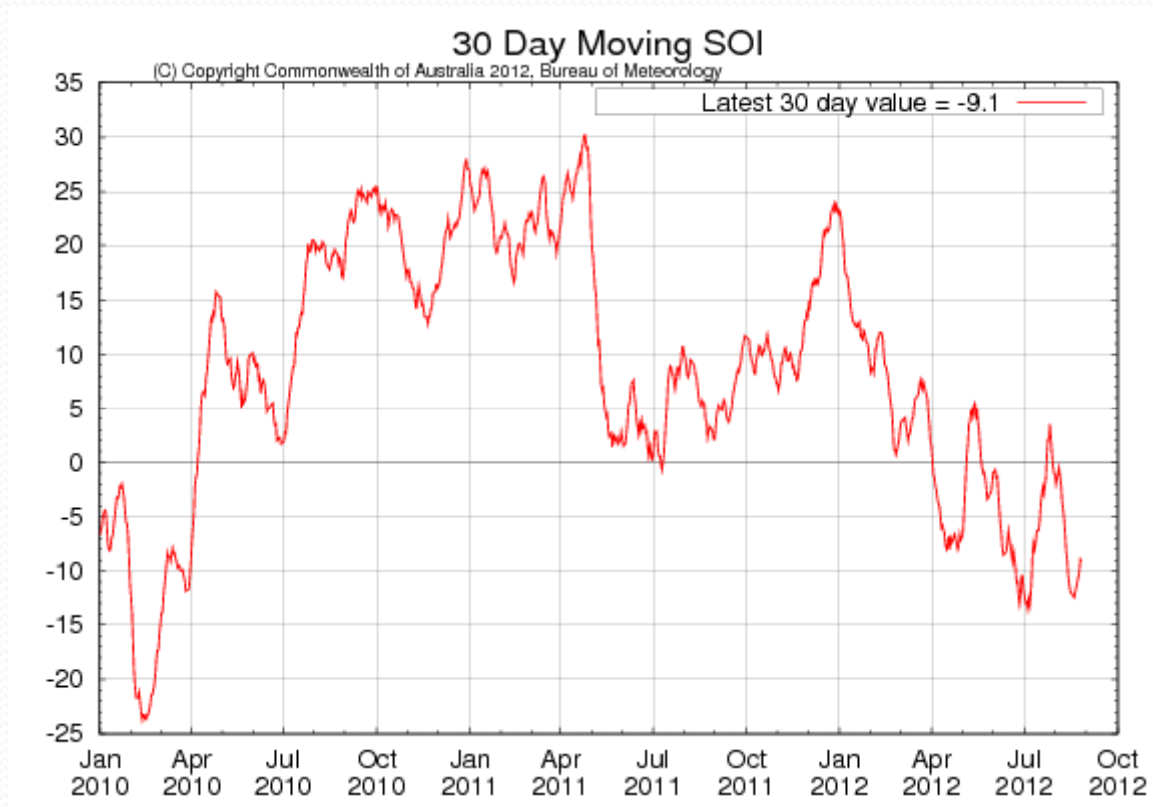
TAO/TRITON 5-Day Mean Temperatures (°C)
Ending on August 27 2012 2°S to 2°N Average
140°E 160°E 180° 160°W 140°W 120°W 100°W



Aug 28 2012 TAO Project Office/PMEL/NOAA

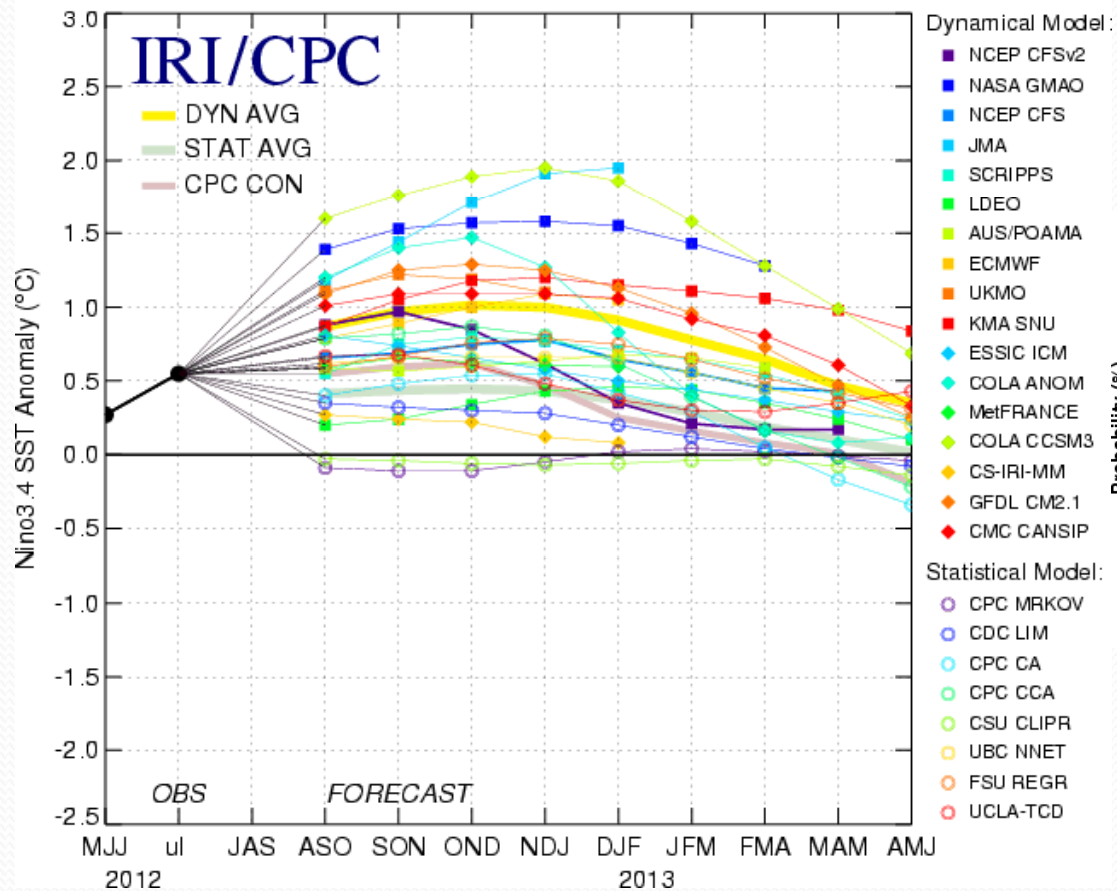
Aug 28 2012

Evolución Índice Oscilación del Sur

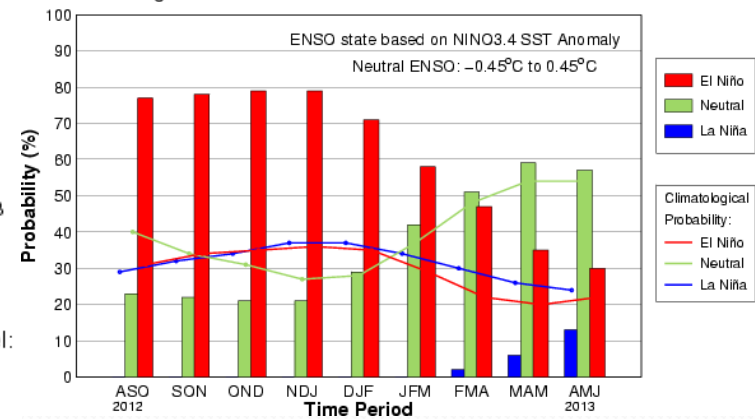



Pronóstico anomalía TSM

Mid-Aug 2012 Plume of Model ENSO Predictions



Mid-Aug IRI/CPC Plume-Based Probabilistic ENSO Forecast

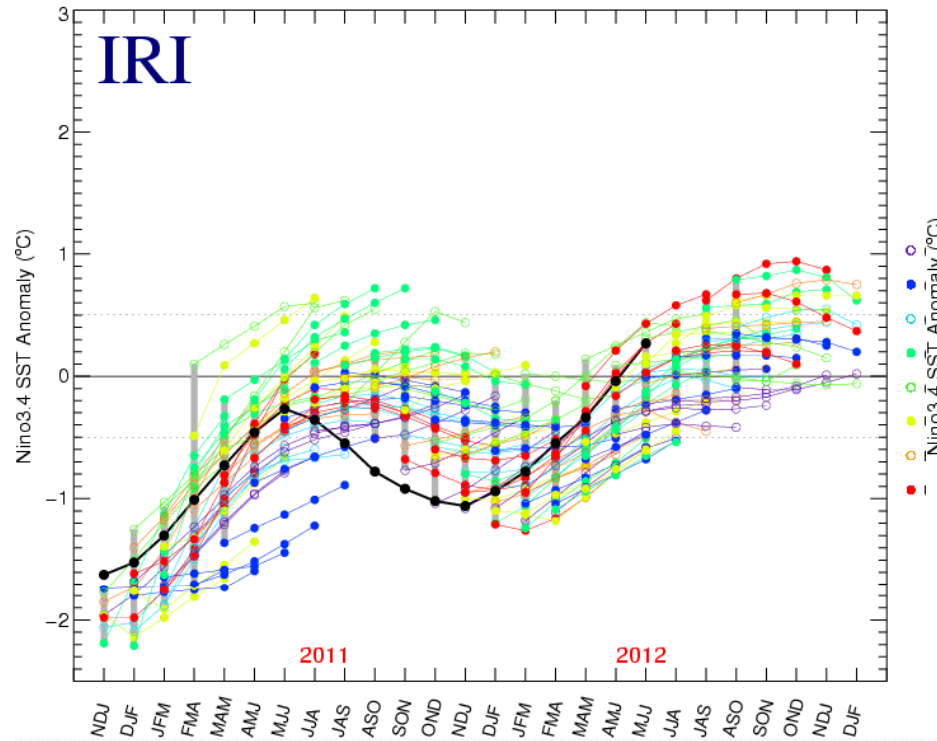




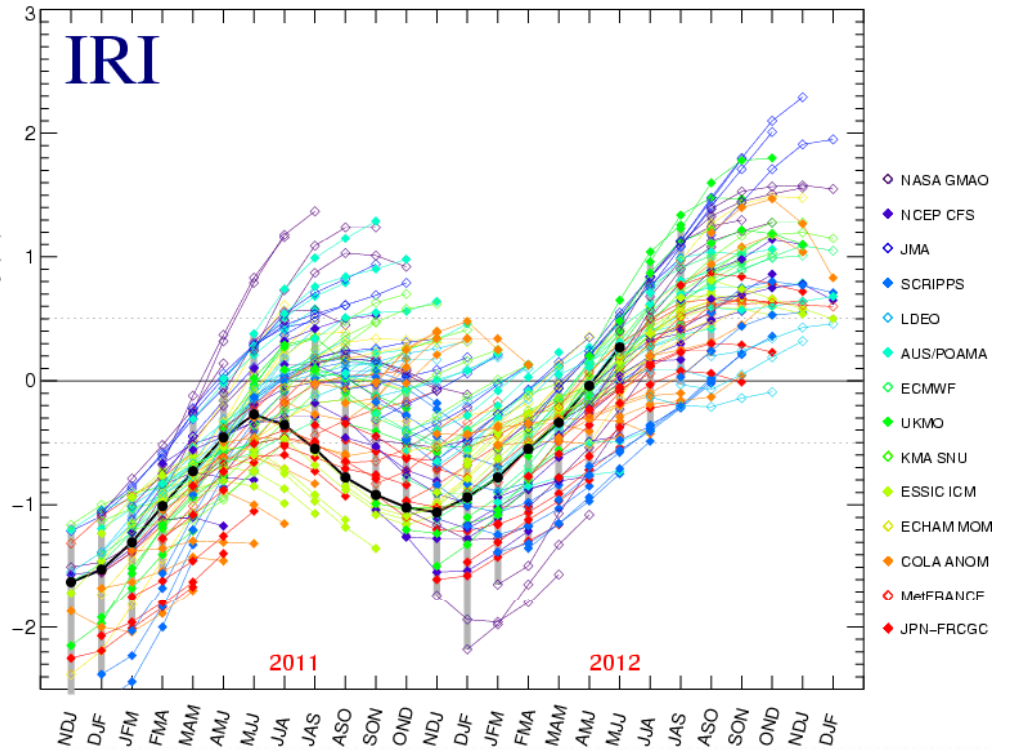
Resumen: El fenómeno ENOS está
evolucionando a una fase Niño débil
que persistiría hasta el verano
2012/2013

Verificación últimos 2 años

ENSO Predictions for statistical models, Nov 10 – Aug 12



ENSO Predictions for dynamical models, Nov 10 – Aug 12

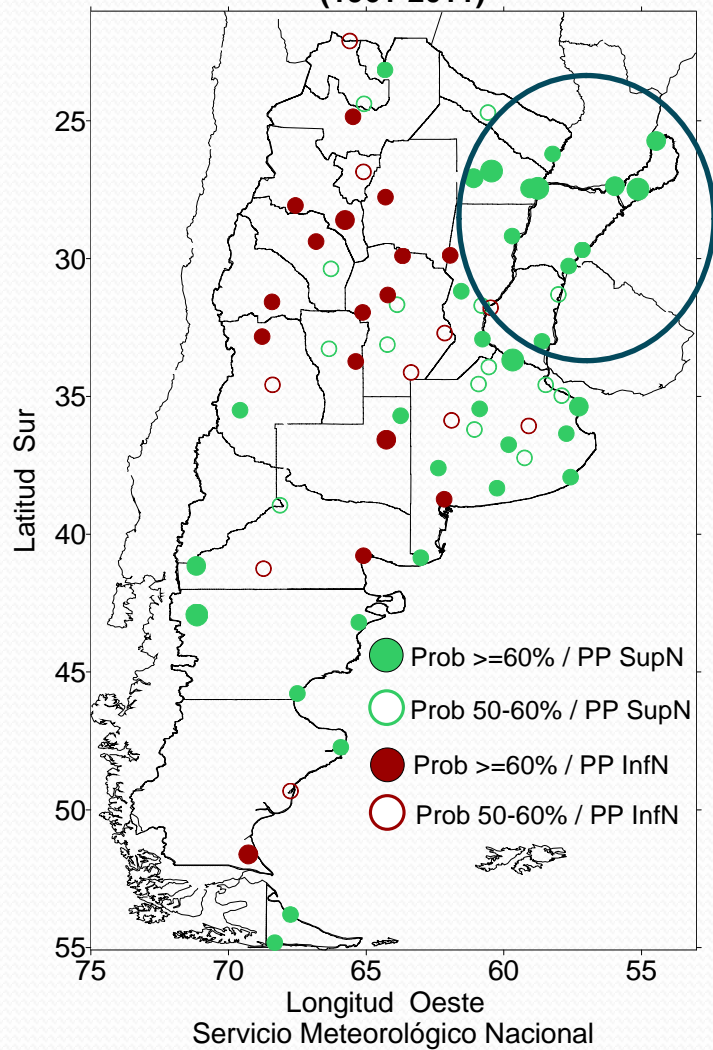




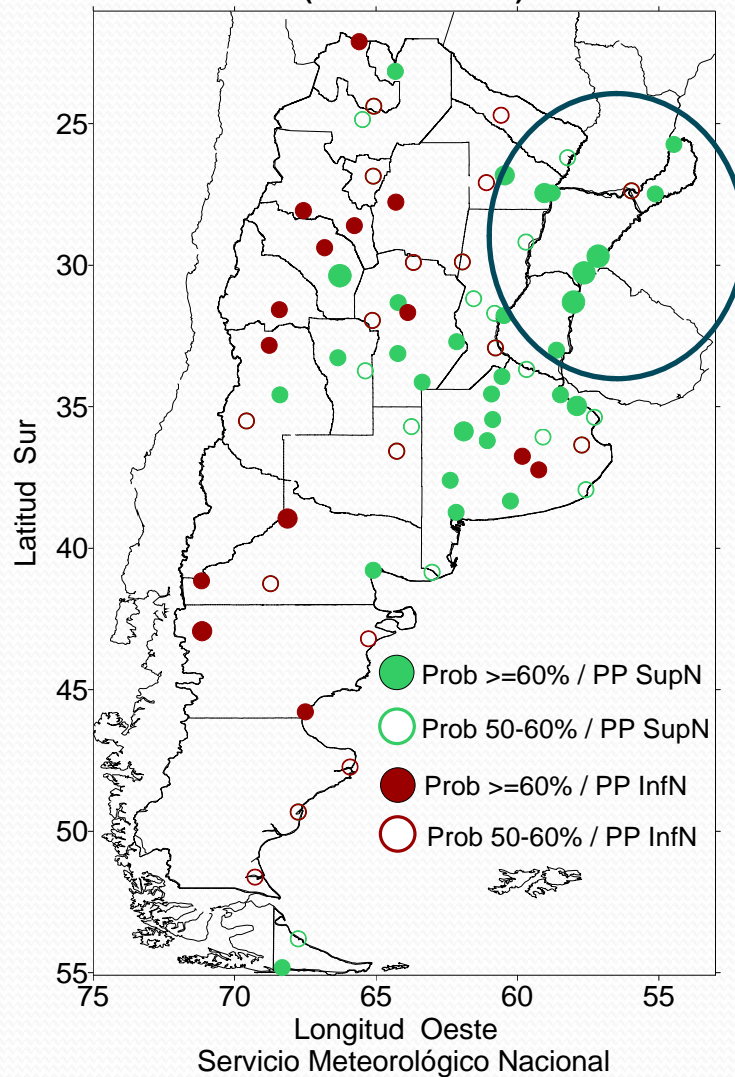
Relación entre El Niño y las precipitaciones

PRECIPITACIÓN POR LOCALIDAD

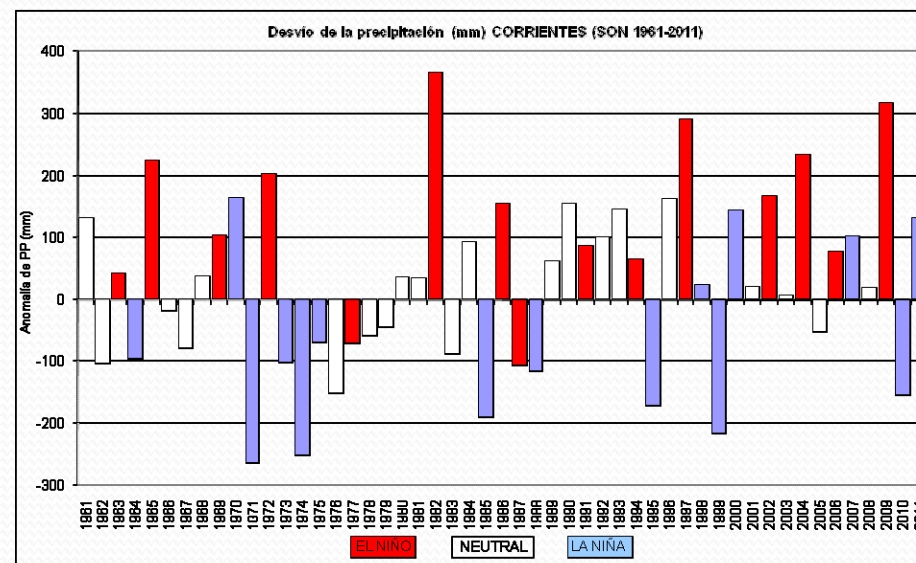
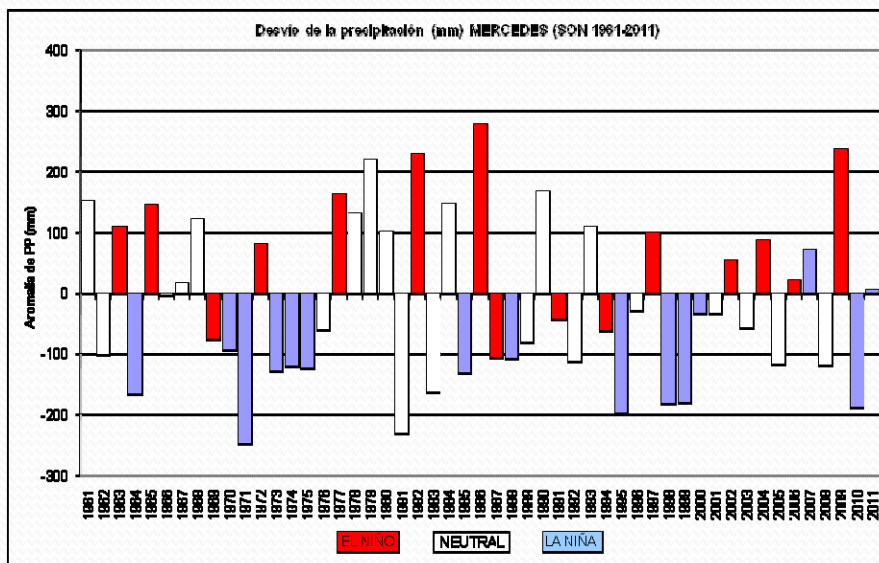
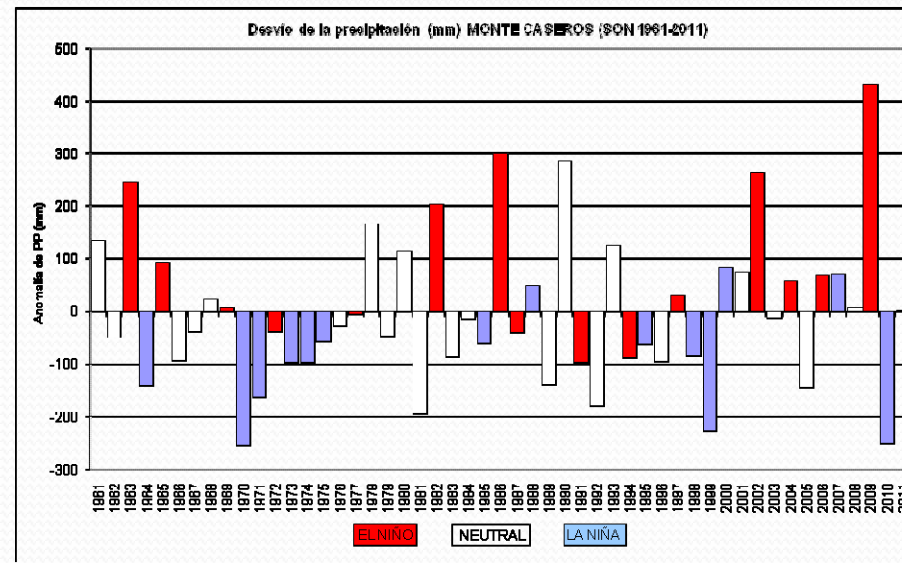
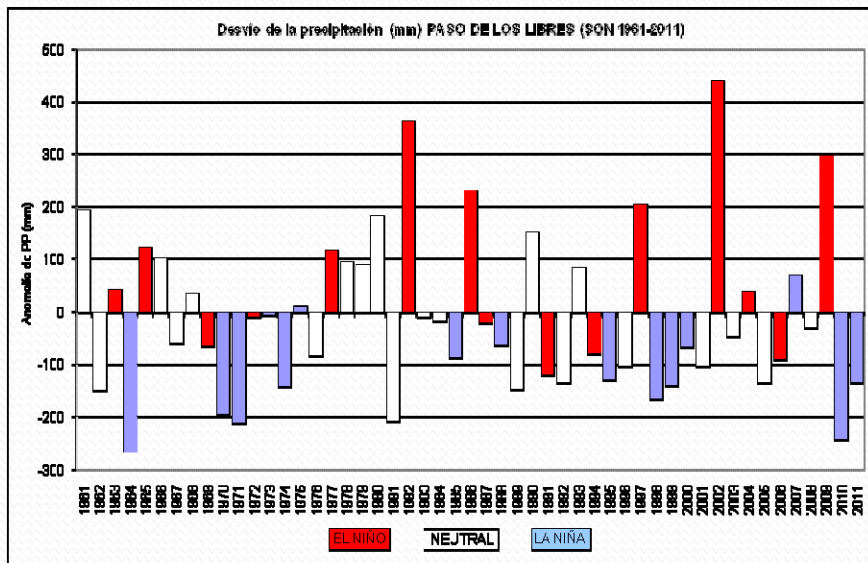
PRECIPITACIÓN S-O-N CON EVENTOS "EL NIÑO"
(1961-2011)



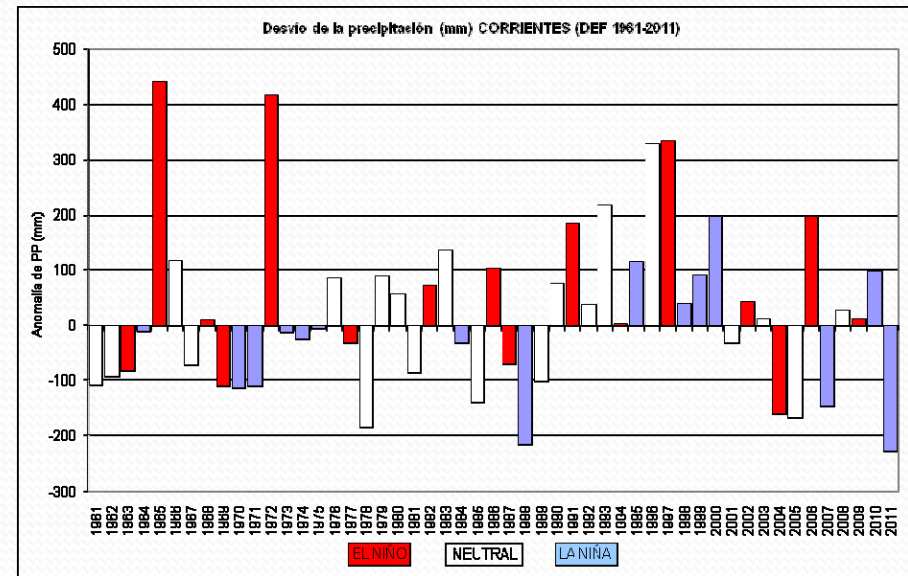
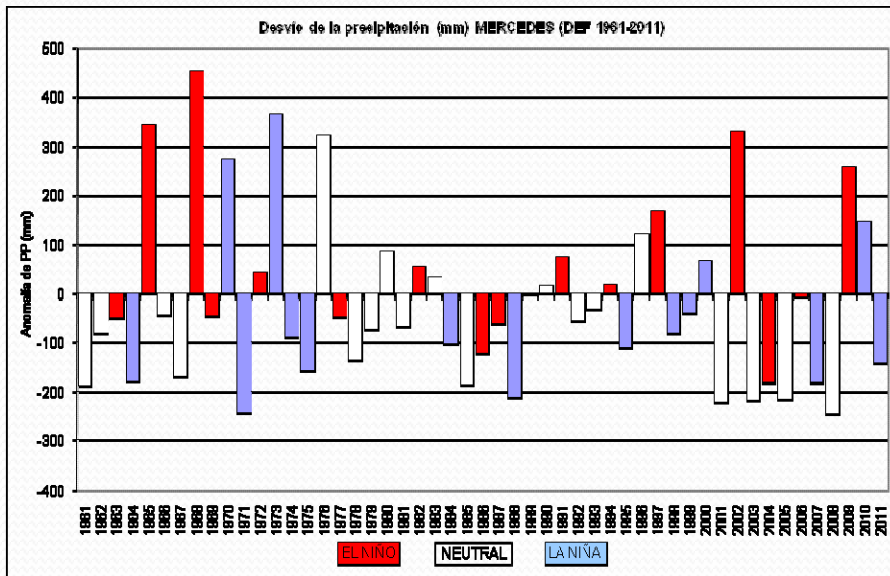
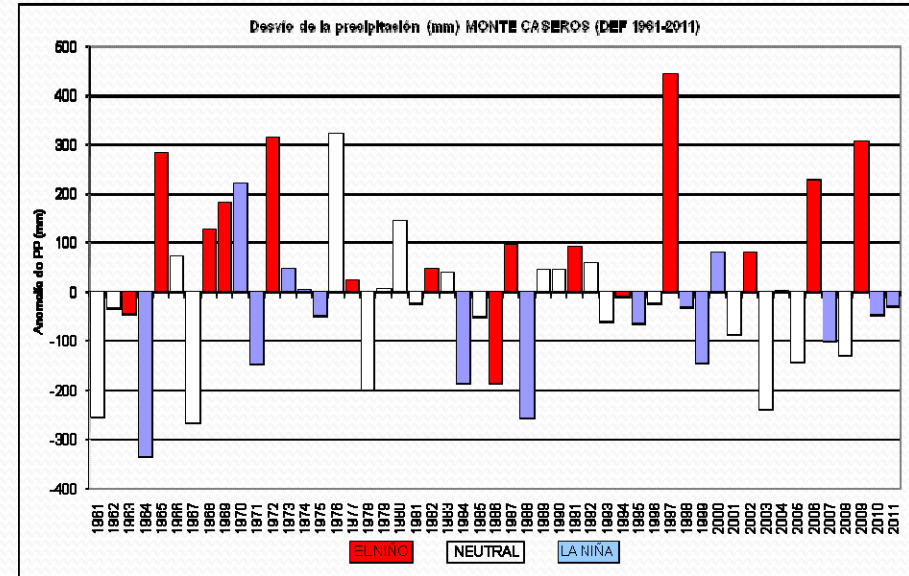
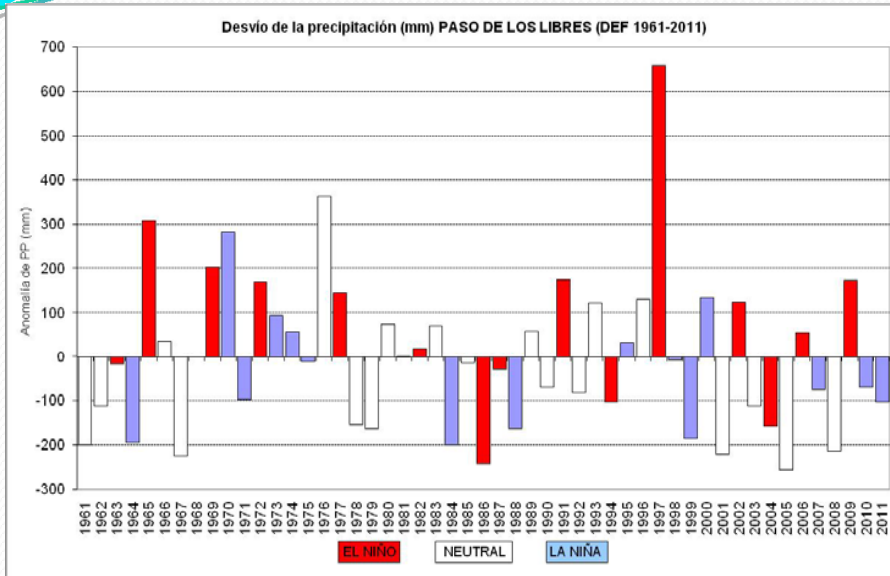
PRECIPITACIÓN D-E-F CON EVENTOS "EL NIÑO"
(1961/62-2011/12)



Precipitación SON

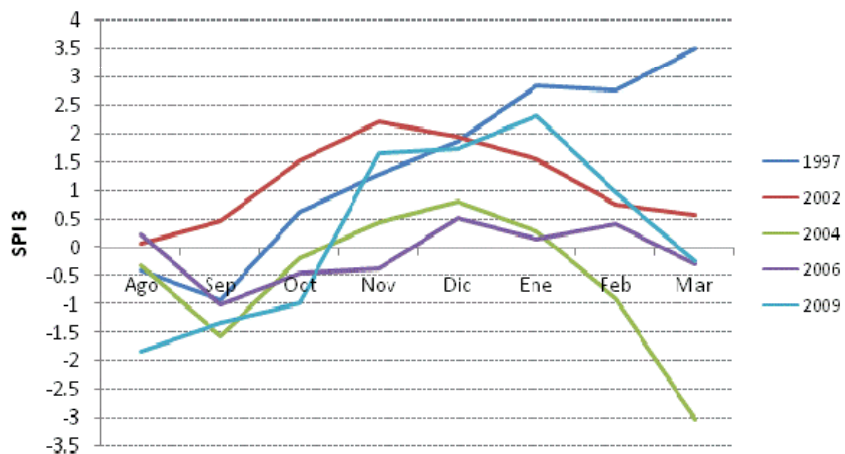


Precipitación DEF

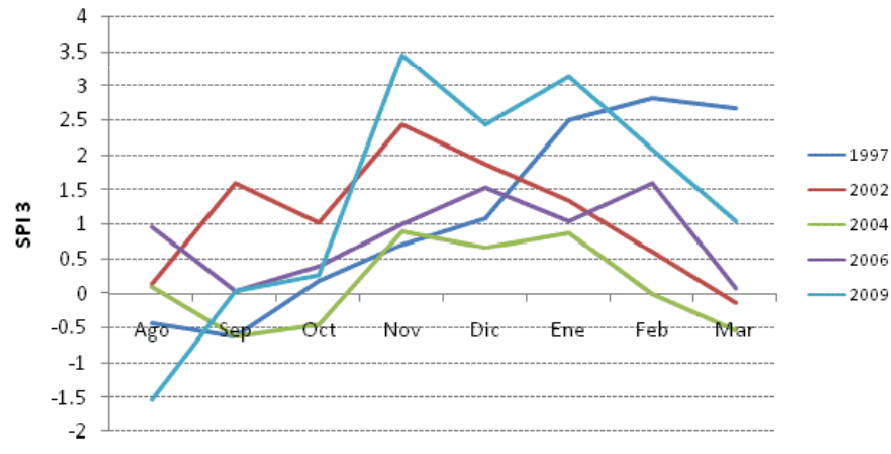


Evolución SPI3 en los últimos 5 Niños

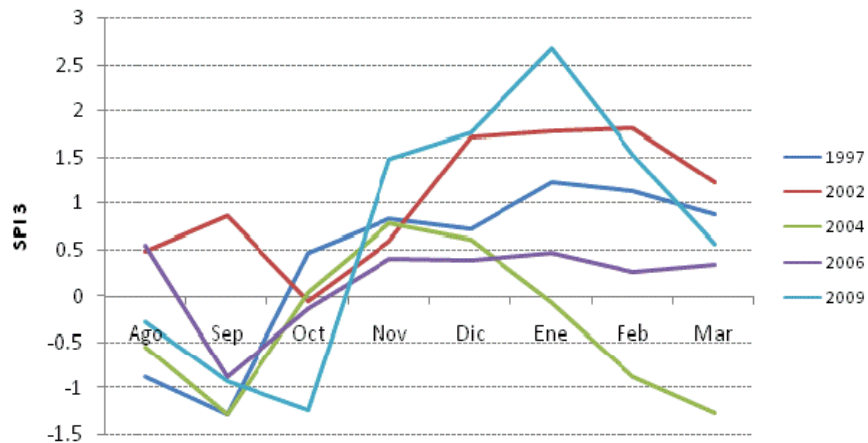
Paso de los Libres
SPI3 - Años Niño



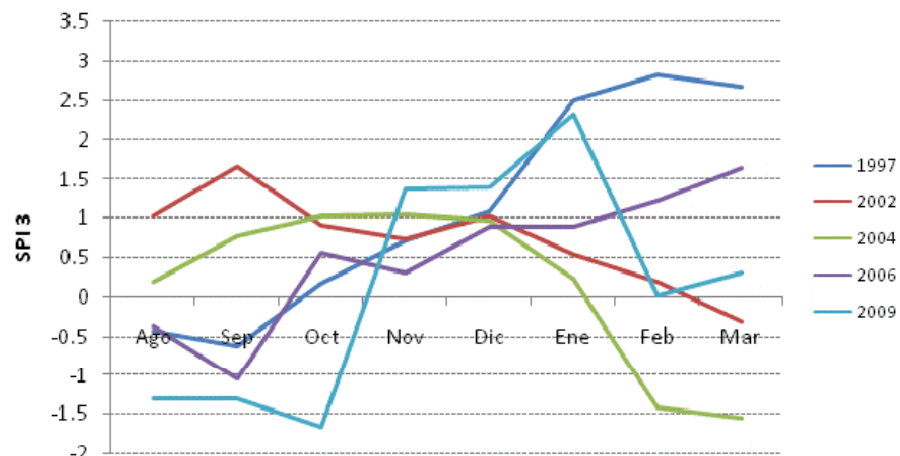
Monte Caseros
SPI3 - Años Niño



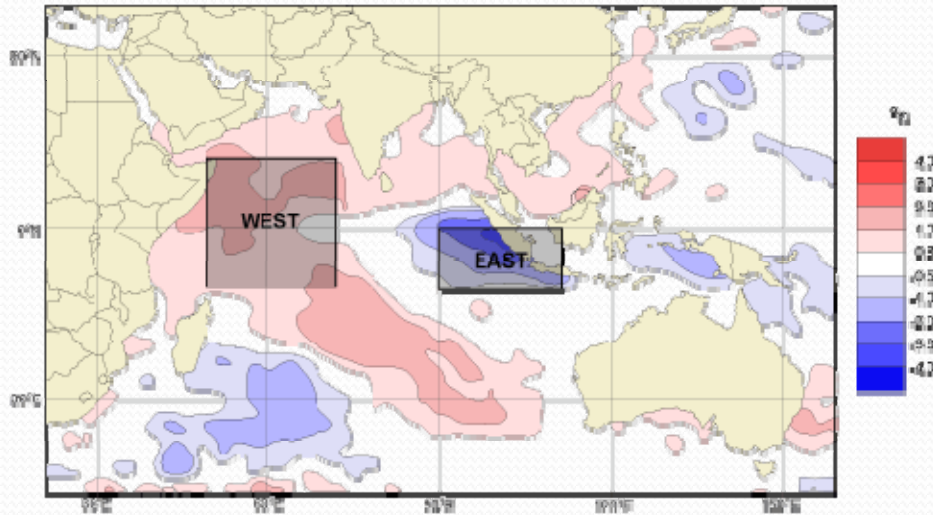
Mercedes
SPI3 - Años Niño



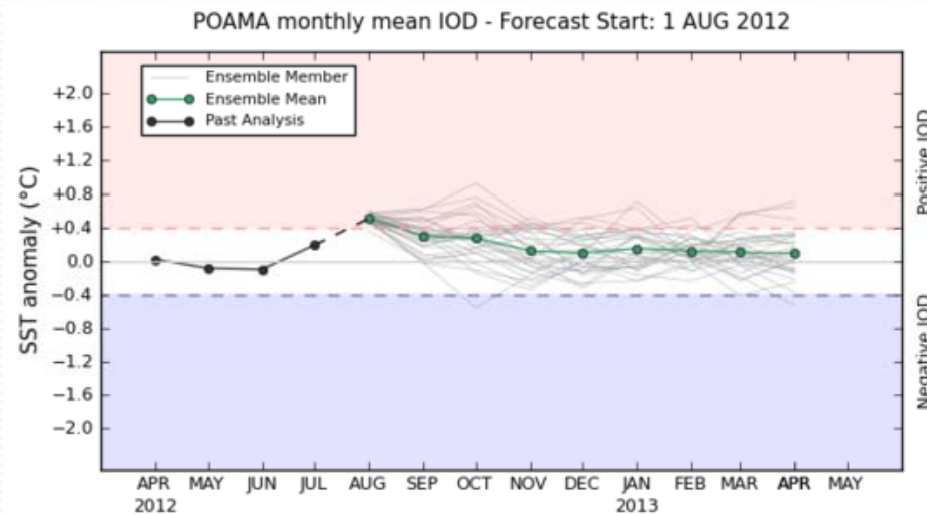
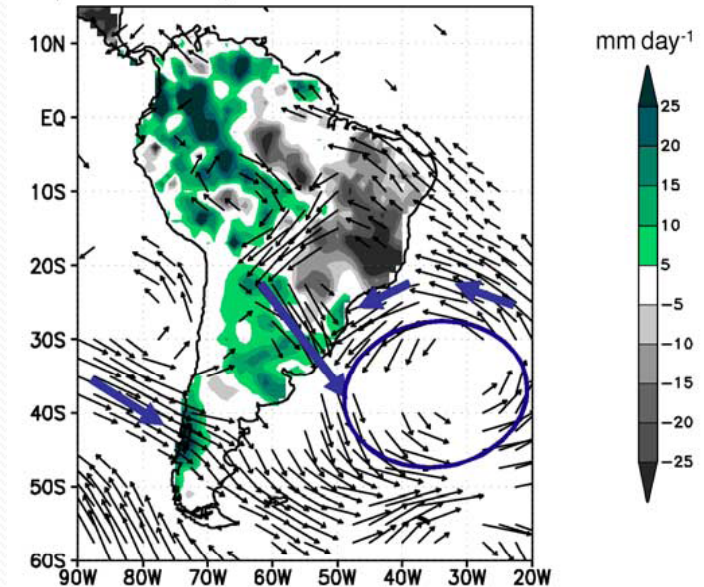
Corrientes
SPI3 - Años Niño



Dipolo del océano Índico



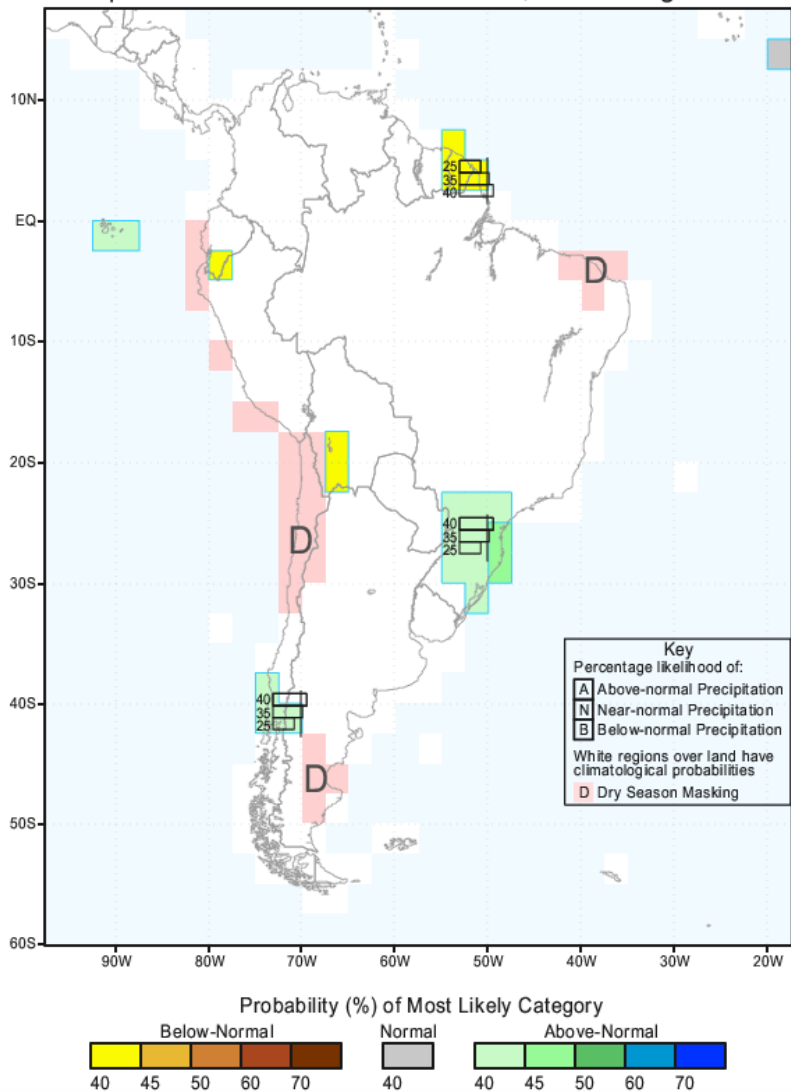
Sep–Nov NCEP/NCAR Rain & Wind Anom.



Influencia media del IOD en la precipitación de Sudamérica (SON) (Chan et al. 2008)

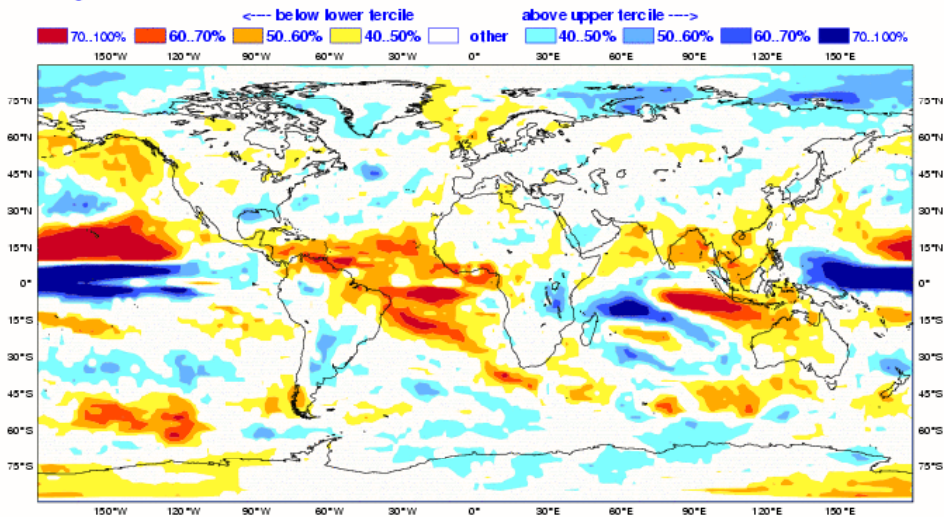
Pronósticos para SON

IRI Multi-Model Probability Forecast for Precipitation for September-October-November 2012, Issued August 2012



EUROSIP multi-model seasonal forecast
 Prob(most likely category of precipitation)
 Forecast start reference is 01/08/12
 Unweighted mean

ECMWF/Met Office/Météo-France
 SON 2012
 No significance test applied

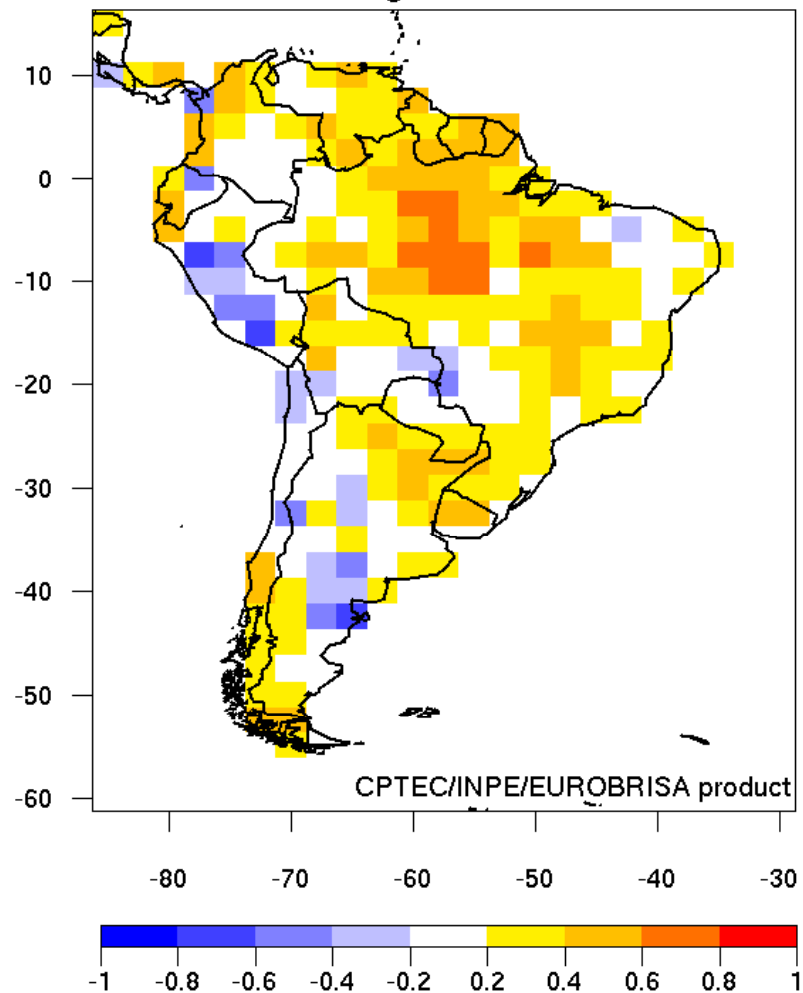


Forecast issue date: 15/08/2012

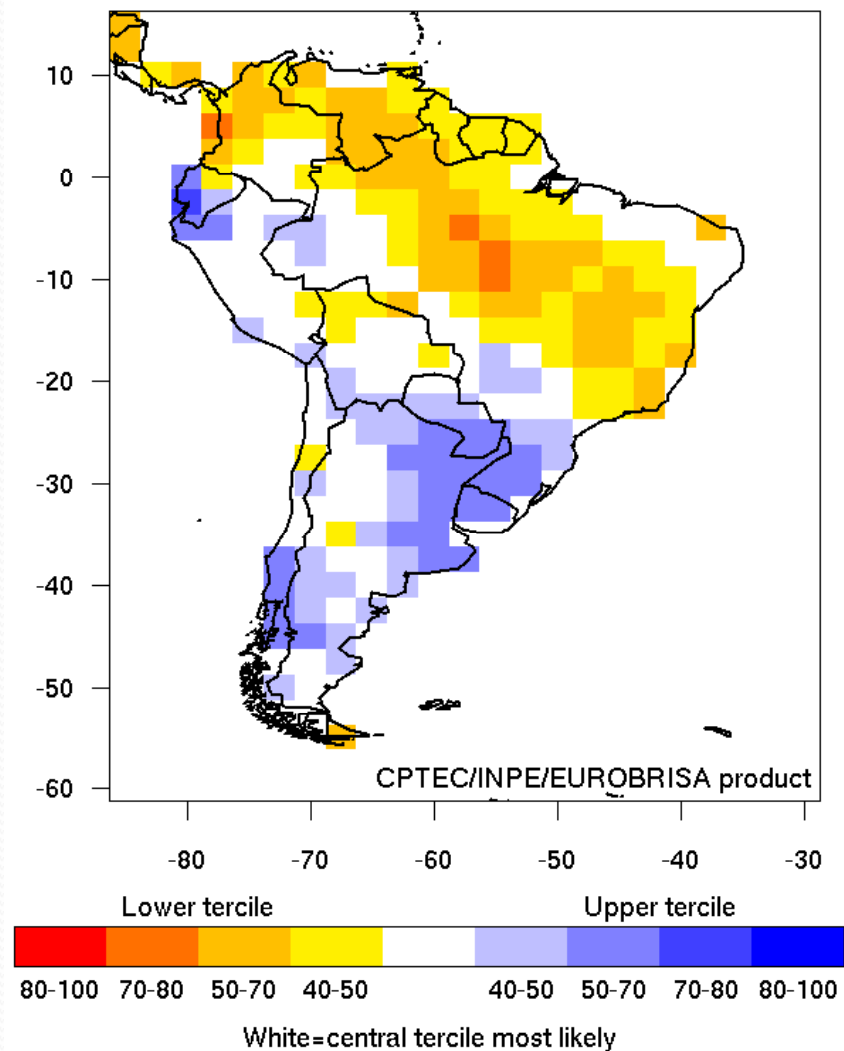
ECMWF

Pronósticos para SON

Correlation between forecast and obs. anomaly
Integrated: Precipitation (1981-2005)
Issued: Aug Valid for SON

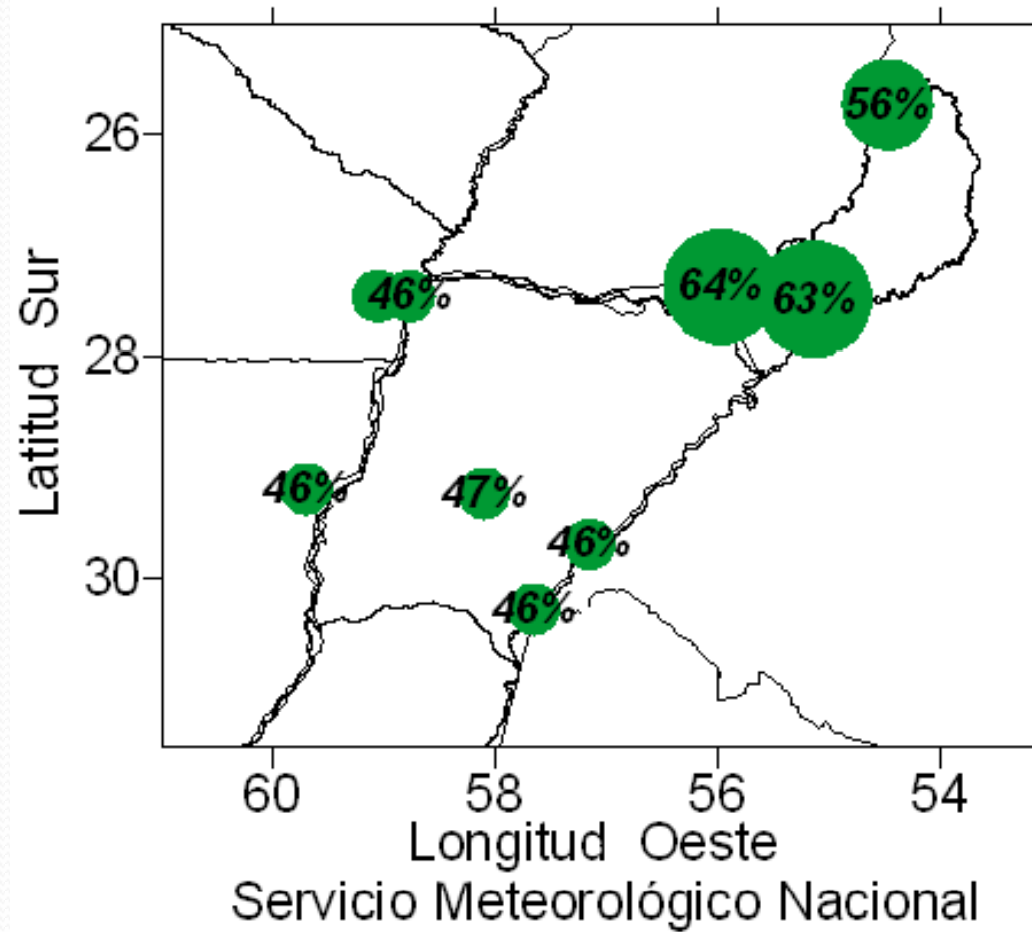



Integrated: Prob. of most likely precip. tercile (%)
Issued: Aug 2012 Valid for SON 2012



Pronóstico estadístico SMN

Pronóstico de Precipitación SEP-OCT-NOV 2012

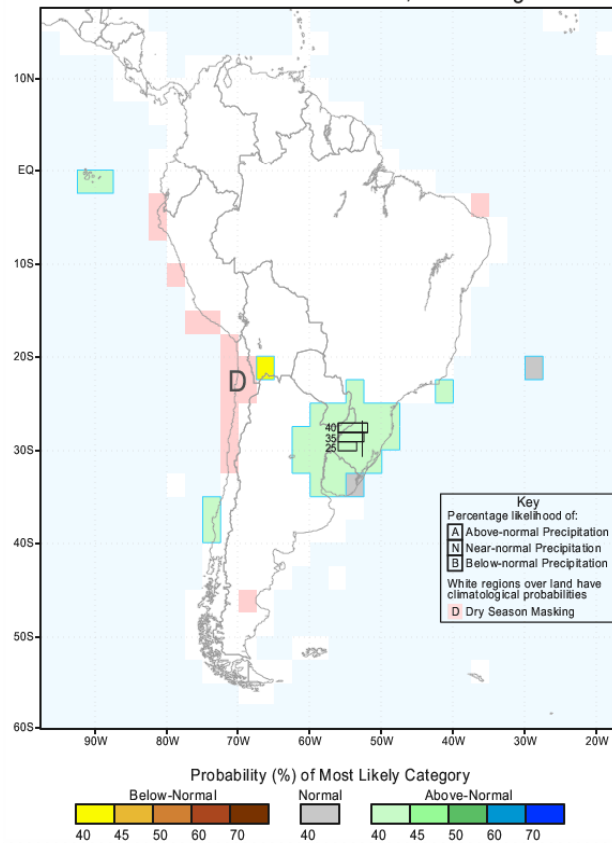




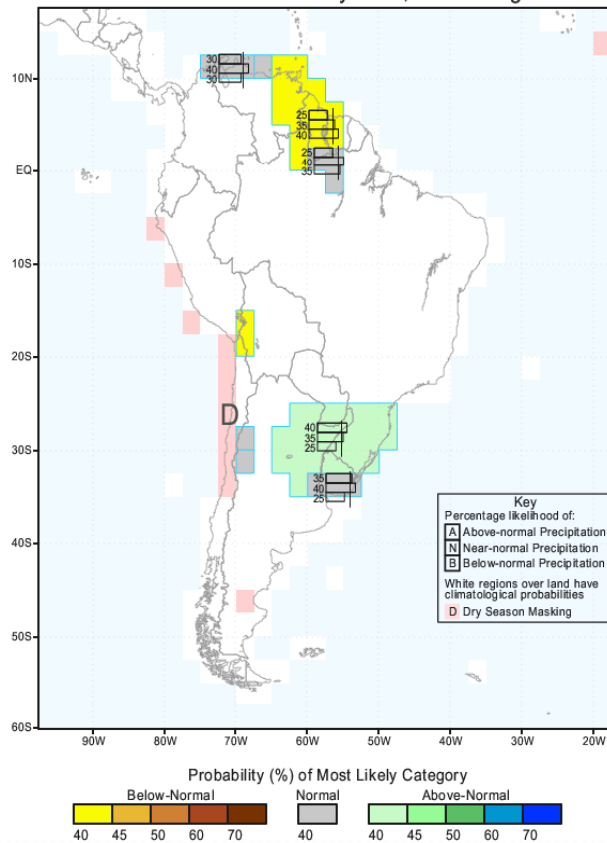
Pronóstico SON: mayor probabilidad de ocurrencia de precipitaciones normales o superiores a las normales.



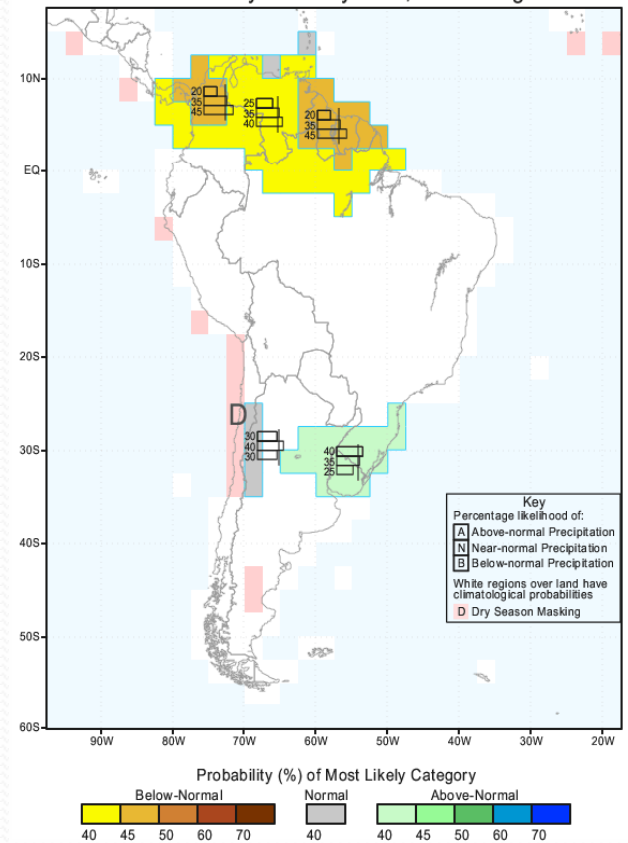
IRI Multi-Model Probability Forecast for Precipitation for October-November-December 2012, Issued August 2012




IRI Multi-Model Probability Forecast for Precipitation for November-December-January 2013, Issued August 2012



IRI Multi-Model Probability Forecast for Precipitation for December-January-February 2013, Issued August 2012





Pronóstico OND: mayor probabilidad de ocurrencia de precipitaciones normales o superiores a las normales. EFM 2013 se mantendría el mismo patrón, si bien la confiabilidad es menor.



GRACIAS POR SU ATENCIÓN

PREGUNTAS?



Sumario

- Precipitaciones en los últimos meses
- Estado y pronóstico del ENOS
- Relación ENOS y la precipitación en Corrientes
- Otros indicadores para el pronóstico
- Pronóstico trimestre SON y OND
- Escenario EFM 2013