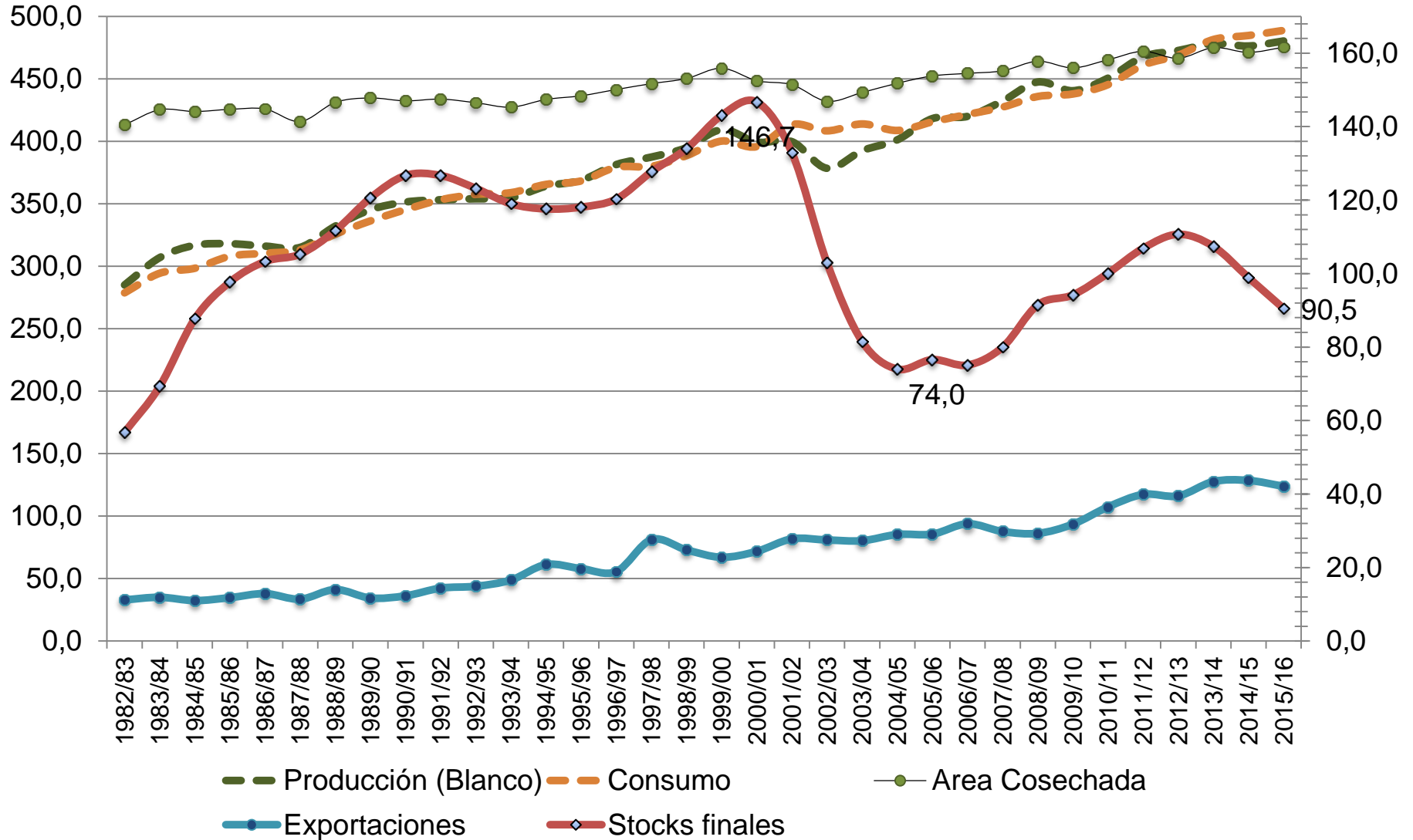


# Tendencias globales

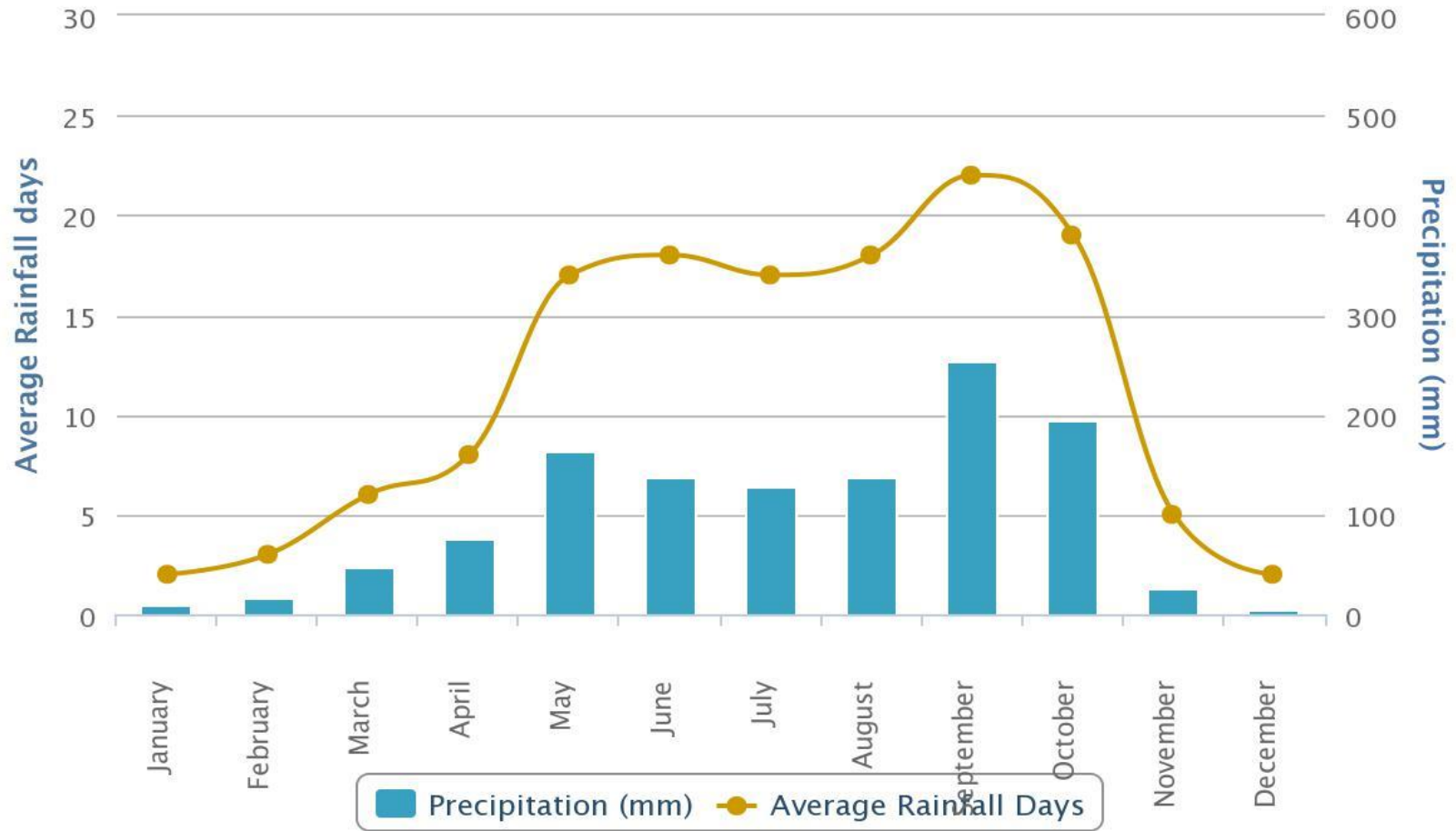
- ⊙ El peso relativo de los exportadores se está modificando
- ⊙ Los importadores producen más (Asia, África)
- ⊙ Los gobiernos aumentaron su participación (Food Security)
- ⊙ Cheap food vs Farmers' sustainability

# Producción Stock Consumo Comercio



# Precipitaciones en Tailandia

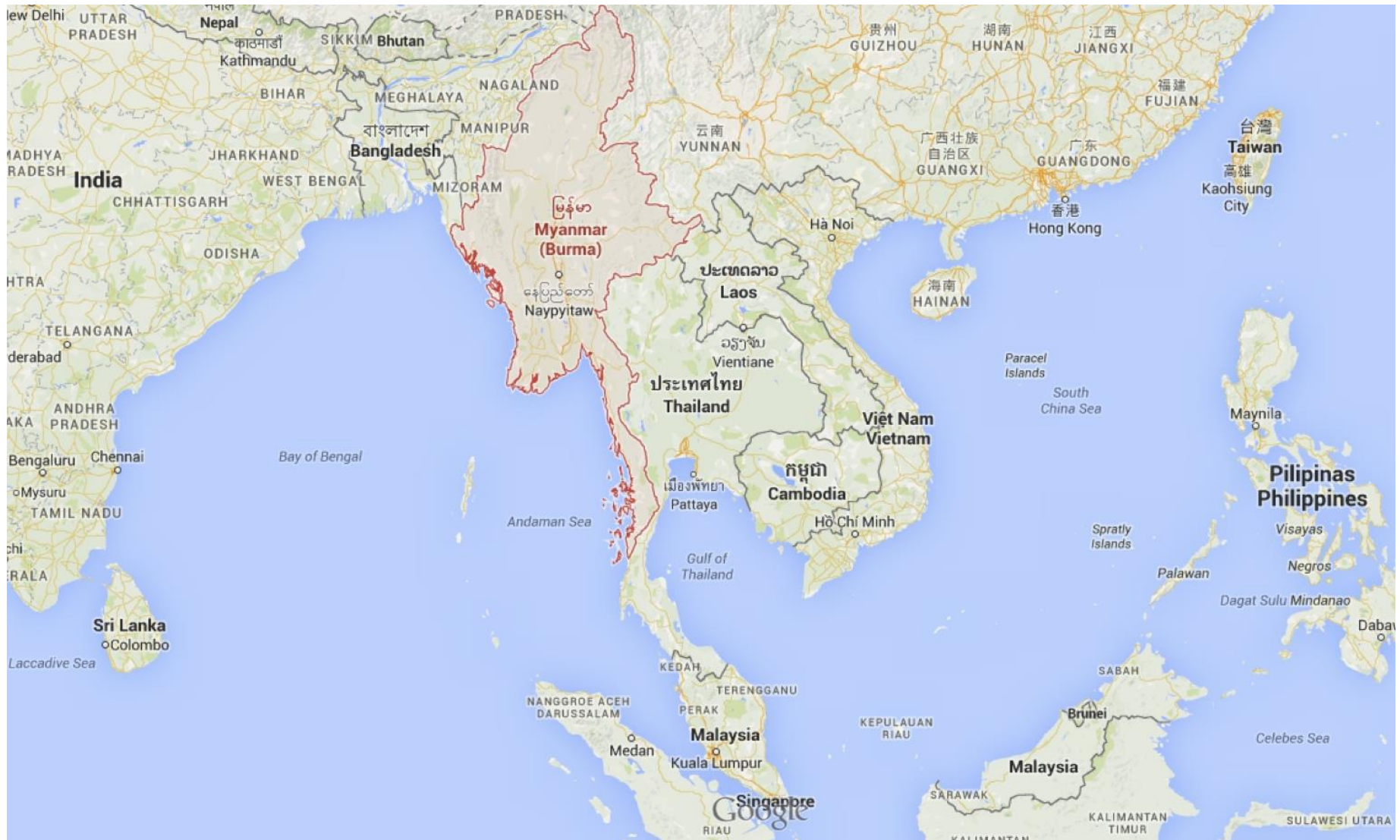
## Average Rainfall (mm Graph for Bangkok)



# Precipitaciones en Tailandia

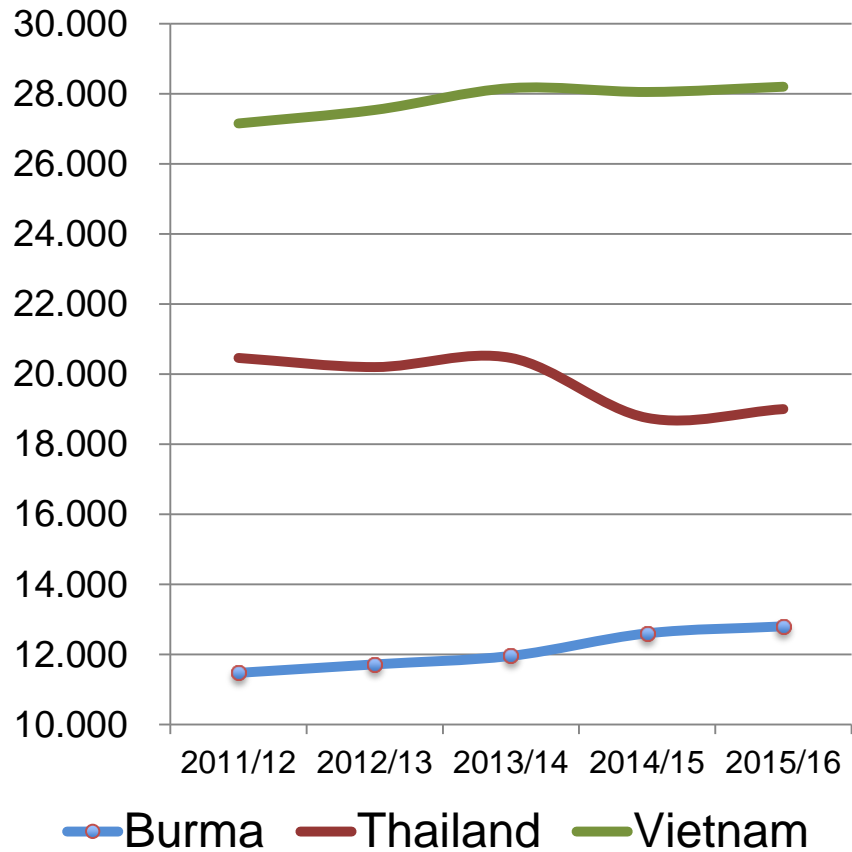


# Sudeste Asiático, nuevo player: Birmania

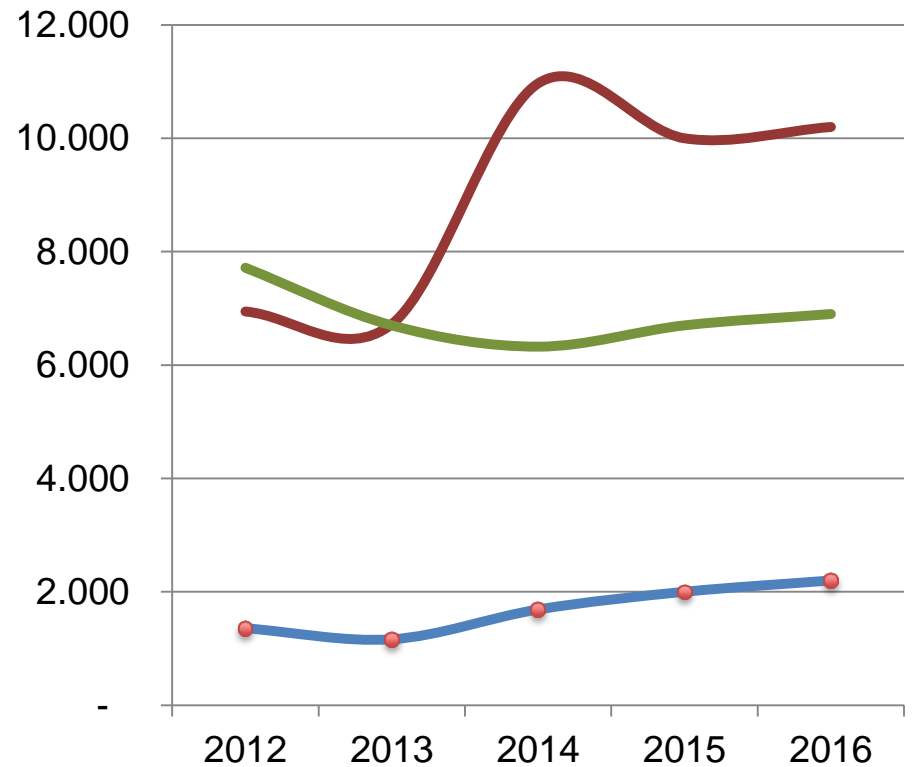


# Sudeste Asiático, nuevo player: Birmania

## Producción



## Exportación



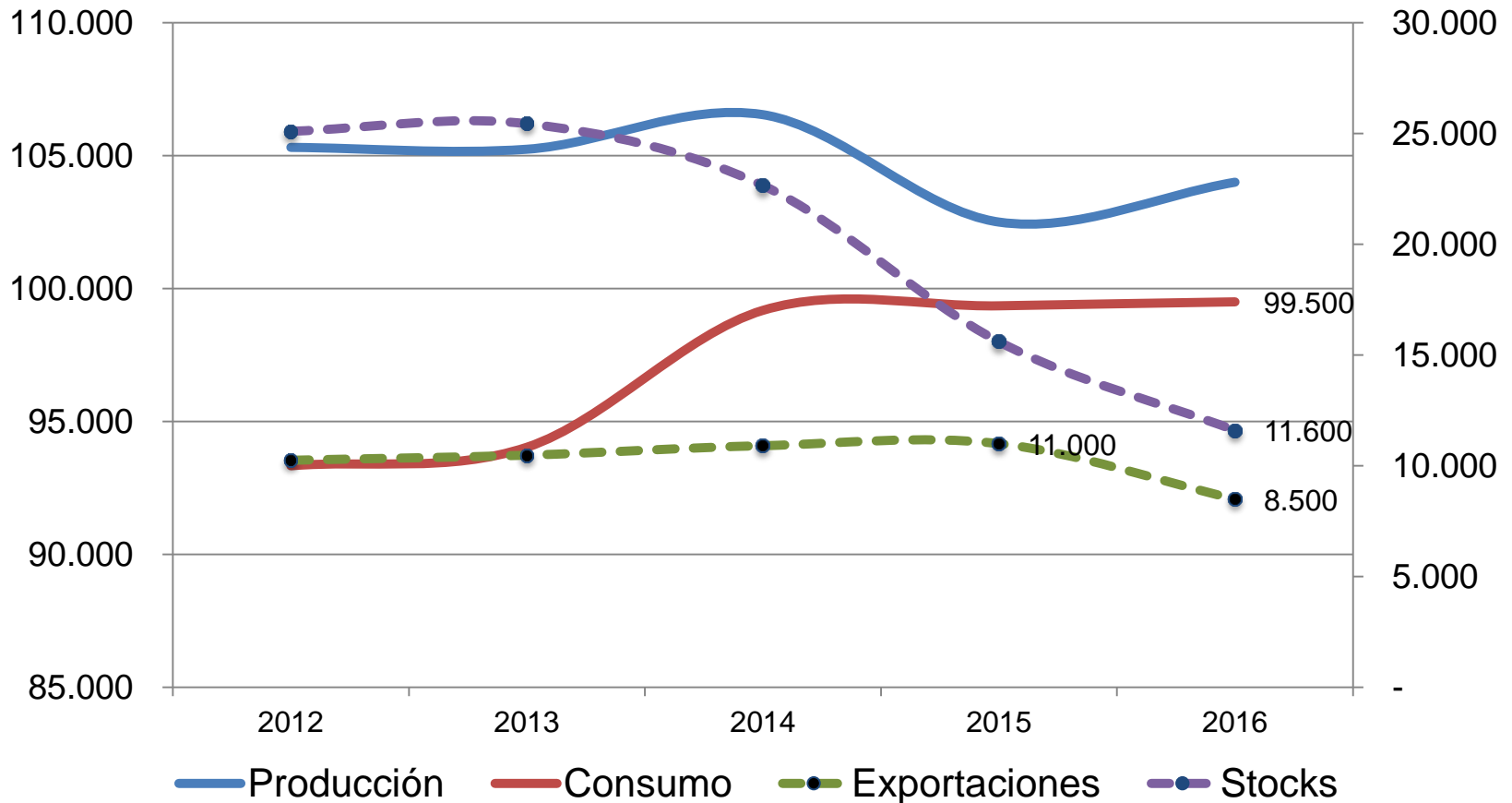
# India

TPDS - Department of Food and Public Distribution

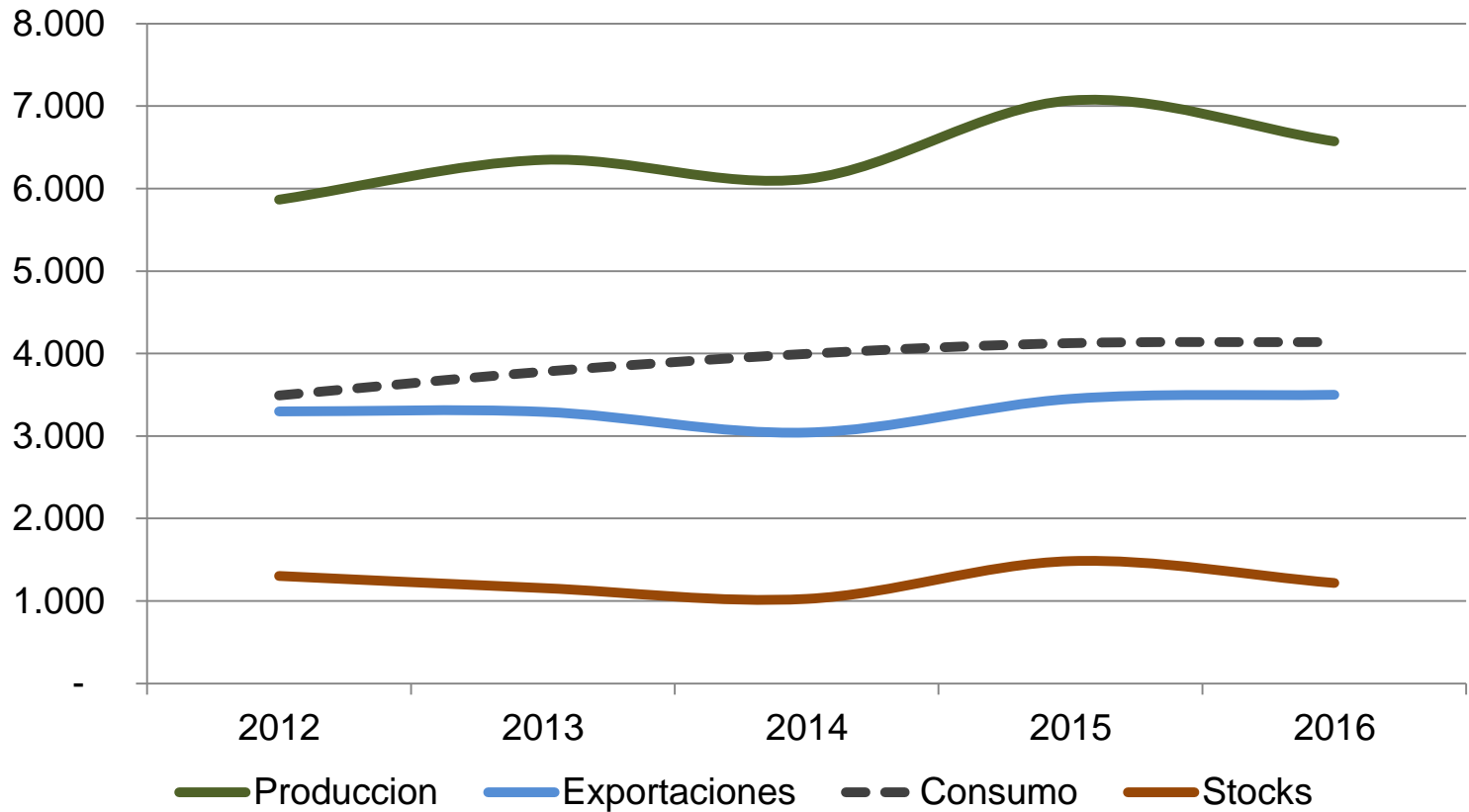
5 kg por mes por persona

Precio Subsidiado 3 rupias por kilo

Alcance objetivo 75% población rural y 50% población urbana



# USA



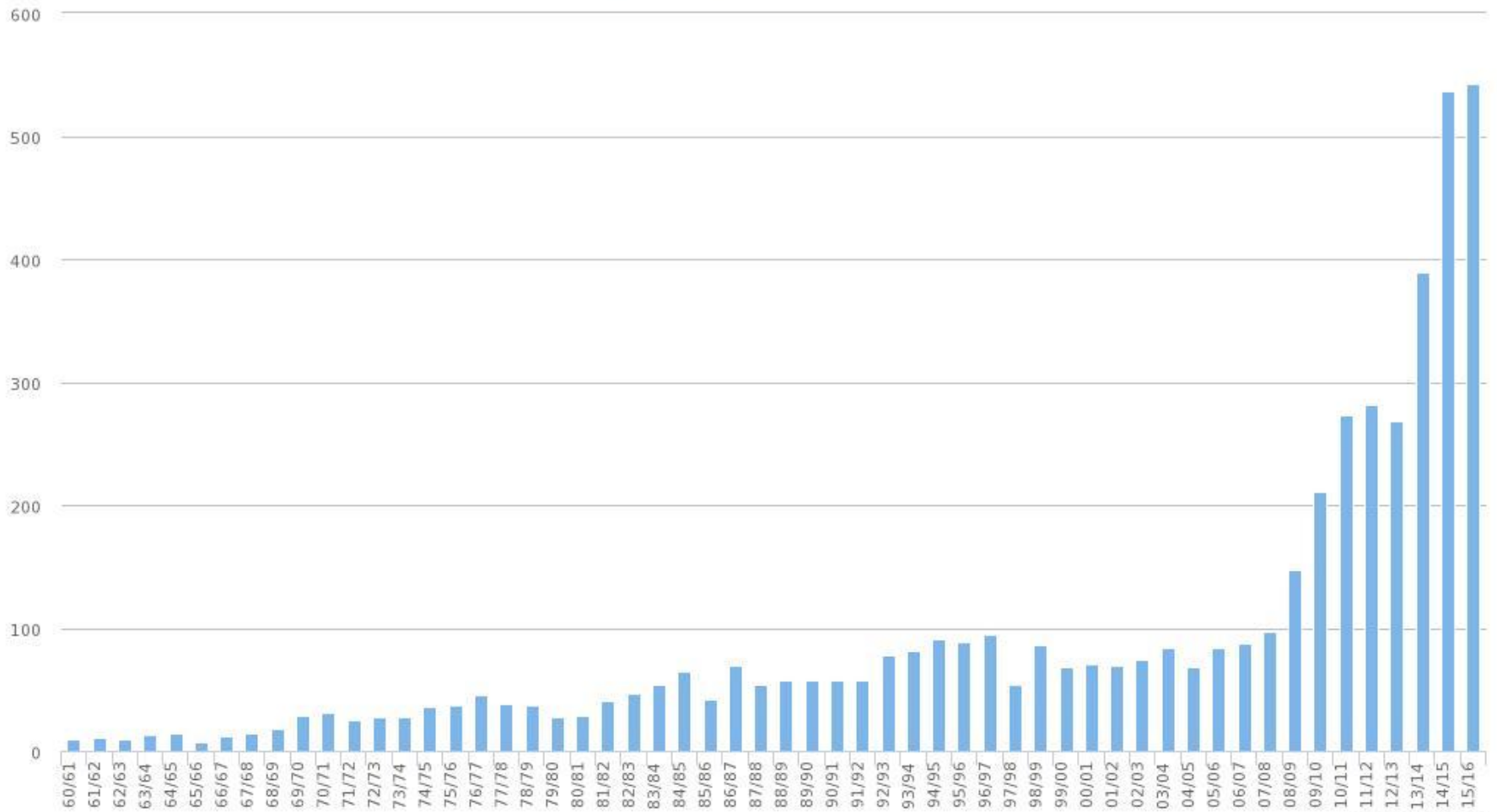


# Precios - CBOT

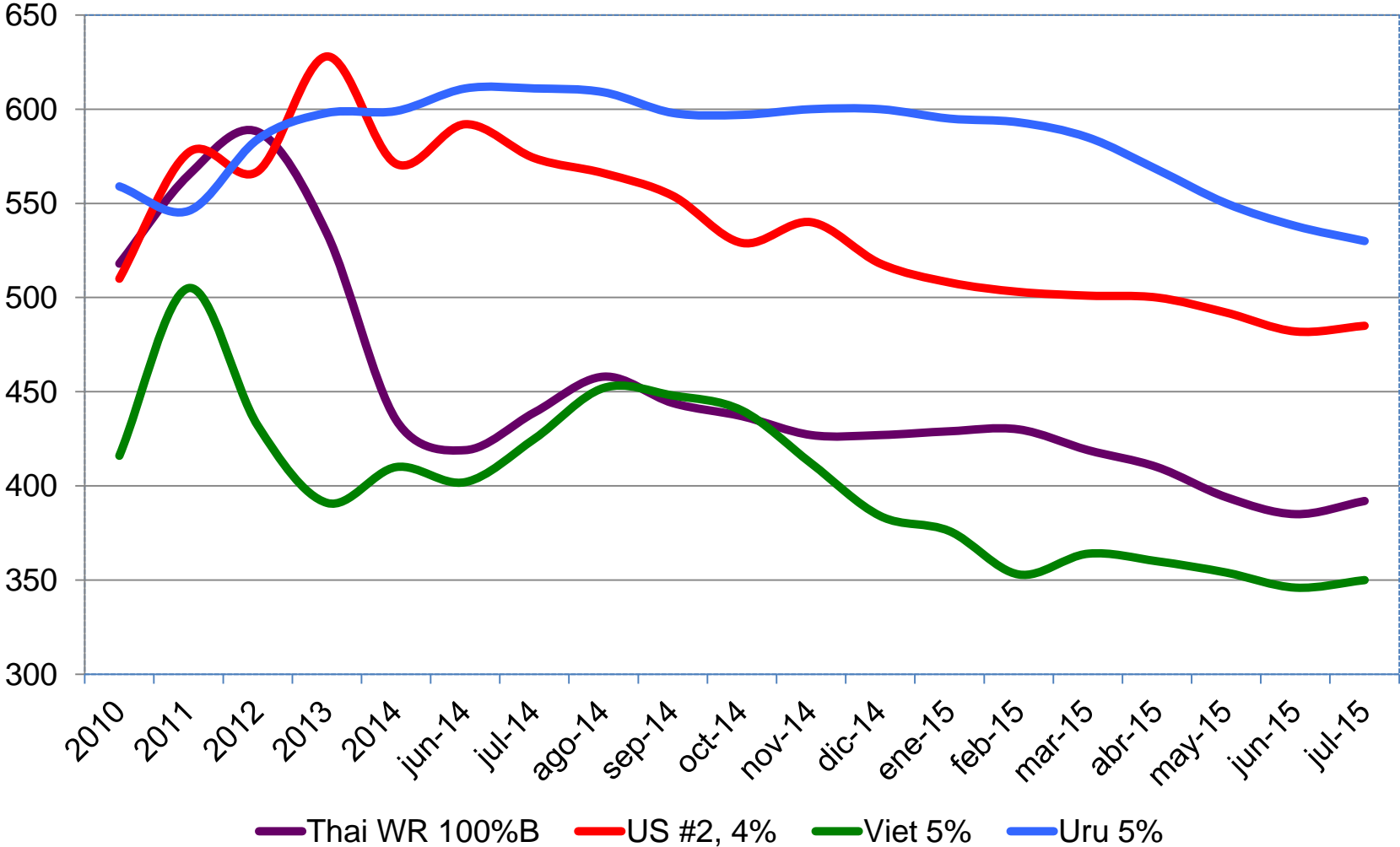


# Paraguay

Rice. Paraguay. Production. Dynamics



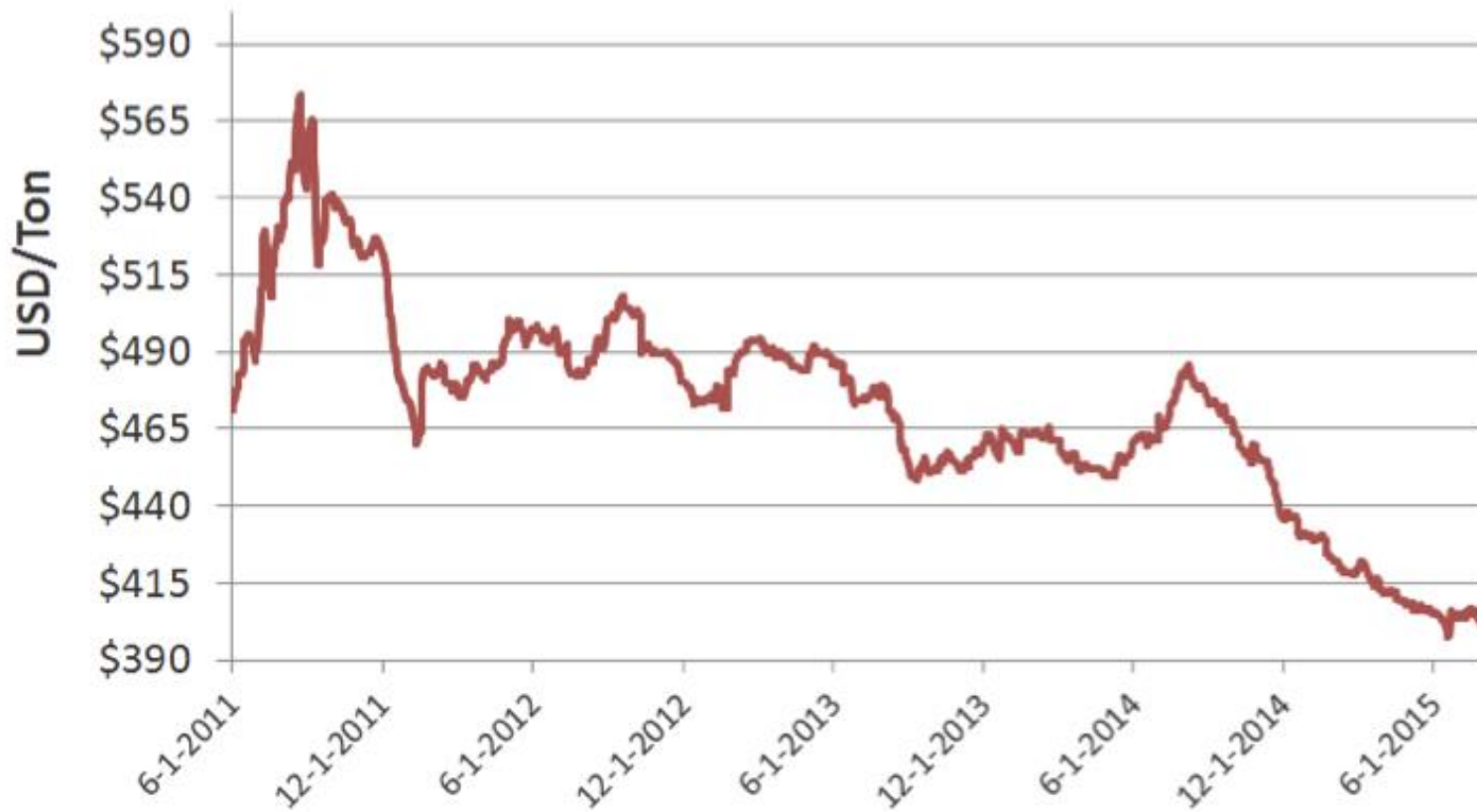
# Precios



# Precios

## Oryza White Rice Index

© Oryza



# Exchange Rate - Brasil

## USDBRL:CUR

↑ 3.4967 BRL

+0.0260  
+0.75%

As of 14:47:13 ET on 08/05/2015.

OPEN	DAY RANGE	PREVIOUS CLOSE	52WK RANGE
3.4797	3.4529 - 3.4989	3.4710	2.2269 - 3.4989

1D | 1M | 1Y | **5Y** Time Frame

Add Comparison +

Indicators ▾



# Exchange Rate - Argentina

## USDARS:CUR

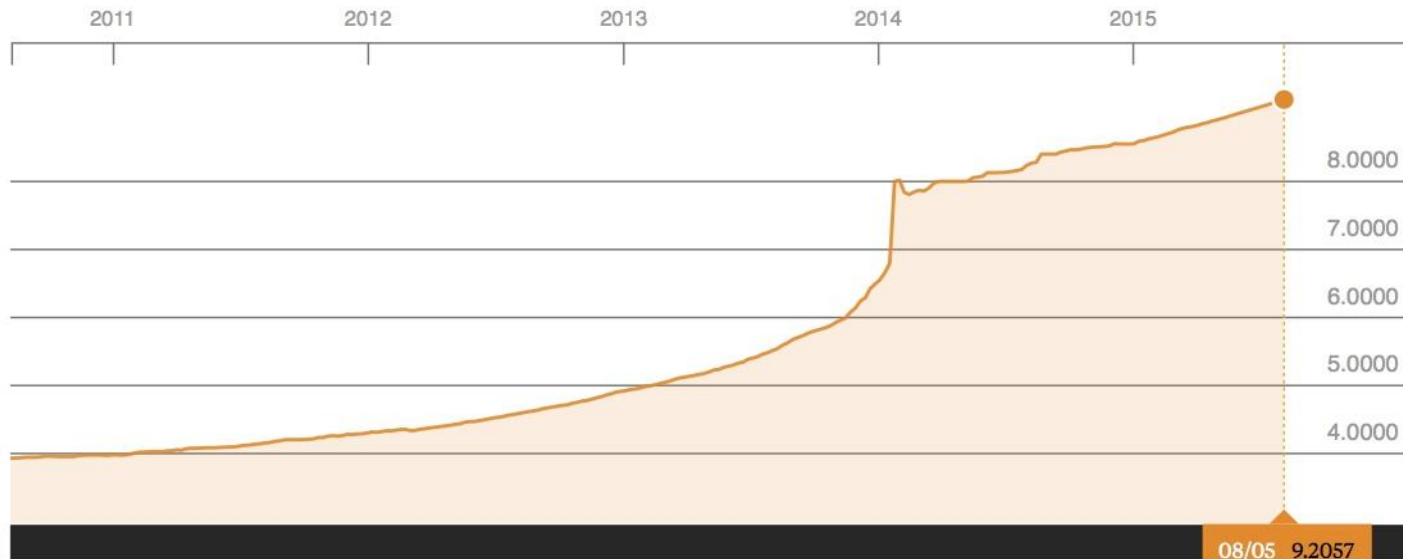
↑ 9.2057 ARS

+0.0074  
+0.08%

As of 13:59:56 ET on 08/05/2015.

OPEN	DAY RANGE	PREVIOUS CLOSE	52WK RANGE
9.2031	9.1987 - 9.2084	9.1983	8.2533 - 9.2104

**1D** | 1M | 1Y | **5Y** Time Frame    Add Comparison +    Indicators ▾



# Competitividad

## ÍNDICE BIG-MAC

SUB/SOBRE VALUACIÓN DE LAS MONEDAS

PAÍS	PRECIO BIGMAC EN US\$	SUB O SOBREVALUACIÓN DEL TIPO DE CAMBIO
ARGENTINA (CUARTO DE LIBRA)	7,22	50,83%
ESTADOS UNIDOS	4,79	-
BRASIL	4,28	-10,59%
URUGUAY	4,13	-13,74%
CHILE	3,27	-31,76%
PERU	3,14	-34,42%
MEXICO	3,11	-35,01%
COLOMBIA	2,92	-39,12%

FUENTE: IERAL

*iProfesional.com*